

# **WORLD MOTOR VEHICLES PRODUCTION BY COUNTRY AND TYPE 2011**

**October 14, 2013 edition**

## DEFINITIONS

Cette brochure "Statistiques de l'OICA" regroupe **es statistiques mondiales de véhicules**, obtenues à partir d'enquêtes auprès des organisations nationales professionnelles, membres ou correspondants de l'OICA.

### Les définitions des types de véhicules

**Les voitures particulières** sont des véhicules à moteur ayant au moins quatre roues, affectés au transport de personnes, comportant, outre le siège du conducteur, huit places assises au maximum.

**Les véhicules utilitaires légers** sont des véhicules à moteur ayant au moins quatre roues, affectés au transport de marchandises et ayant un poids total autorisé en charge jusqu'à 5 tonnes. Les **minibus**, véhicules jusqu'à 5 tonnes de poids total autorisé en charge, sont compris dans cette catégorie ; ils sont affectés au transport de personnes et comportent, outre le siège du conducteur, plus de huit places assises.

**Les véhicules légers** regroupent les voitures particulières et les véhicules utilitaires (jusqu'à 5 tonnes).

**Les véhicules industriels** sont des véhicules affectés au transport de marchandises ayant un poids total autorisé en charge supérieur à 5 tonnes. Cette catégorie comprend les tracteurs routiers conçus pour être attelés à une semi-remorque.

**Les cars et bus** sont des véhicules à moteur affectés au transport de personnes comportant, outre le siège du conducteur, plus de huit places assises et ayant un poids total autorisé en charge supérieur à 5 tonnes.

Les **véhicules utilitaires** regroupent les véhicules utilitaires légers, les véhicules industriels et les cars et bus.

### Les unités

L'unité est le véhicule.

### La périodicité

Les organisations professionnelles sont interrogées sur leurs données trimestrielles. Chaque été, une interrogation sur les six derniers mois permet de se faire une première idée des résultats de l'année en cours.

## DEFINITIONS

This brochure "Statistiques de l'OICA" contains world motor vehicle production statistics, obtained from national trade organisations, OICA members or correspondents.

### Vehicle types definitions

**Passenger cars** are motor vehicles with at least four wheels, used for the transport of persons, and having no more than eight seats, driver excluded.

**Light commercial vehicles** are motor vehicles with at least four wheels, used for the transport of goods. Gross vehicle weight (in metric tons) is used as a limit between light commercial vehicles and heavy trucks. This limit depends on national and professional definitions, and varies between 3.5 and 7 tons. **Minibuses**, derived from light commercial vehicles, enter this category. They are used for the transport of persons, have more than eight seats, driver excluded, and their GVW is below this limit.

**Light vehicles** include passenger cars and light commercial vehicles.

**Heavy trucks** are vehicles intended for the transport of goods. Their GVW is over the above limit. They include tractors designed for towing semi-trailers.

**Buses and coaches** are used for the transport of persons, having more than eight seats driver excluded, and a GVW over the above limit.

**Commercial vehicles** include light commercial vehicles, heavy trucks, coaches and buses.

### Units

Unit is the vehicle.

### Periodicity

National trade organisations are surveyed quarterly. Every Summer, a survey of the last six months provides a first estimate of the current year's results.

| UNITS                                   | YTD 2010          | YTD 2011          |              |                  |
|---|-------------------|-------------------|--------------|------------------|
| ALL VEHICLES                            | Q4                | Q4                | VARIATION    | DIFFERENCE       |
| <b>EUROPE</b>                           | <b>19 794 758</b> | <b>21 118 311</b> | <b>+6,7%</b> | <b>1 323 553</b> |
| - EUROPEAN UNION 27 countries           | 17 078 825        | 17 686 495        | +3,6%        | 607 670          |
| - EUROPEAN UNION 15 countries           | 13 797 321        | 14 285 872        | +3,5%        | 488 551          |
| Double Counts Austria / Germany         | 0                 | 0                 |              |                  |
| Double Counts Austria / Japan           | 0                 | 0                 |              |                  |
| Double Counts Belgium / Germany         | -80 150           | -85 000           | +6,1%        | -4 850           |
| Double Counts Italy / EU                | -4 346            | -6 570            | +51,2%       | -2 224           |
| Double Counts Portugal / Japan          | -10 047           | -8 847            | -11,9%       | 1 200            |
| Double Counts Portugal / Spain          | 0                 | 0                 |              |                  |
| AUSTRIA                                 | 104 997           | 152 505           | +45,2%       | 47 508           |
| BELGIUM                                 | 555 302           | 595 084           | +7,2%        | 39 782           |
| FINLAND                                 | 6 665             | 2 631             | -60,5%       | -4 034           |
| FRANCE *** AS OF 2011, CARS AND LCV     | 2 229 421         | 2 242 928         | +0,6%        | 13 507           |
| GERMANY(1)                              | 5 905 985         | 6 311 103         | +6,9%        | 405 118          |
| ITALY                                   | 838 186           | 790 348           | -5,7%        | -47 838          |
| NETHERLANDS                             | 94 132            | 73 151            | -22,3%       | -20 981          |
| PORTUGAL                                | 158 729           | 192 242           | +21,1%       | 33 513           |
| SPAIN                                   | 2 387 900         | 2 373 329         | -0,6%        | -14 571          |
| SWEDEN (2) *** AS OF 2011, CARS ONLY    | 217 084           | 188 969           | -13,0%       | -28 115          |
| UNITED KINGDOM                          | 1 393 463         | 1 463 999         | +5,1%        | 70 536           |
| - EUROPEAN UNION New Members            | 3 281 504         | 3 400 623         | +3,6%        | 119 119          |
| Double Counts Slovakia / Czech republic | 0                 | 0                 |              |                  |
| Double Counts Slovakia / Germany        | 0                 | 0                 |              |                  |
| CZECH REPUBLIC                          | 1 076 384         | 1 199 845         | +11,5%       | 123 461          |
| HUNGARY                                 | 211 461           | 213 531           | +1,0%        | 2 070            |
| POLAND                                  | 869 474           | 838 133           | -3,6%        | -31 341          |
| ROMANIA                                 | 350 912           | 335 232           | -4,5%        | -15 680          |
| SLOVAKIA                                | 561 933           | 639 763           | +13,9%       | 77 830           |
| SLOVENIA                                | 211 340           | 174 119           | -17,6%       | -37 221          |
| - OTHER EUROPE                          | 1 621 376         | 2 242 685         | +38,3%       | 621 309          |
| SERBIA                                  | 15 200            | 11 023            | -27,5%       | -4 177           |
| CIS                                     | 1 606 176         | 2 231 662         | +38,9%       | 625 486          |
| Double Counts Ukraine / World           | -52 330           | -67 050           | +28,1%       | -14 720          |
| RUSSIA                                  | 1 403 244         | 1 990 155         | +41,8%       | 586 911          |
| BELARUS                                 | 15 249            | 24 343            | +59,6%       | 9 094            |
| UKRAINE                                 | 83 133            | 104 654           | +25,9%       | 21 521           |
| UZBEKISTAN                              | 156 880           | 179 560           | +14,5%       | 22 680           |
| TURKEY                                  | 1 094 557         | 1 189 131         | +8,6%        |                  |
| AMERICA                                 | 16 343 430        | 17 793 809        | +8,9%        | 1 450 379        |
| - NAFTA                                 | 12 153 564        | 13 477 706        | +10,9%       | 1 324 142        |
| CANADA                                  | 2 068 189         | 2 135 121         | +3,2%        | 66 932           |
| MEXICO                                  | 2 342 282         | 2 681 050         | +14,5%       | 338 768          |
| USA                                     | 7 743 093         | 8 661 535         | +11,9%       | 918 442          |
| - SOUTH AMERICA                         | 4 189 866         | 4 316 103         | +3,0%        | 126 237          |
| Double counts Venezuela / World         | -76 991           | -75 290           | -2,2%        | 1 701            |
| ARGENTINA                               | 716 540           | 828 771           | +15,7%       | 112 231          |
| BRAZIL                                  | 3 381 728         | 3 407 861         | +0,8%        | 26 133           |
| CHILE                                   | 4 700             | 0                 | -100,0%      | -4 700           |
| COLOMBIA                                | 37 197            | 28 030            | -24,6%       | -9 167           |
| ECUADOR                                 | 22 335            | 24 322            | +8,9%        | 1 987            |
| PERU                                    | 0                 | 0                 |              |                  |
| URUGUAY                                 | 0                 | 0                 |              |                  |
| VENEZUELA                               | 104 357           | 102 409           | -1,9%        | -1 948           |
| ASIA-OCEANIA                            | 40 930 255        | 40 576 318        | -0,9%        | -353 937         |
| Double Counts Asia / world              | 0                 | 0                 |              |                  |
| Double Counts China / world             | -114 774          | -119 670          | +4,3%        | -4 896           |
| Double Counts Thailand / world          | 0                 | 0                 |              |                  |
| AUSTRALIA                               | 244 007           | 224 193           | -8,1%        | -19 814          |
| CHINA                                   | 18 264 761        | 18 418 876        | +0,8%        | 154 115          |
| INDIA                                   | 3 557 073         | 3 927 411         | +10,4%       | 370 338          |
| INDONESIA                               | 702 508           | 838 388           | +19,3%       | 135 880          |
| IRAN                                    | 1 599 454         | 1 649 311         | +3,1%        | 49 857           |
| JAPAN                                   | 9 628 920         | 8 398 630         | -12,8%       | -1 230 290       |
| MALAYSIA                                | 567 715           | 533 695           | -6,0%        | -34 020          |
| PAKISTAN                                | 152 970           | 162 194           | +6,0%        | 9 224            |
| PHILIPPINES                             | 65 625            | 53 921            | -17,8%       | -11 704          |
| SOUTH KOREA                             | 4 271 741         | 4 657 094         | +9,0%        | 385 353          |
| TAIWAN                                  | 303 456           | 343 296           | +13,1%       | 39 840           |
| THAILAND                                | 1 644 513         | 1 457 798         | -11,4%       | -186 715         |
| VIETNAM                                 | 42 286            | 31 181            | -26,3%       | -11 105          |
| AFRICA                                  | 515 076           | 556 637           | +8,1%        | 41 561           |
| Double Counts Egypt / world             | -39 640           | -27 830           | -29,8%       | 11 810           |
| Double Counts South Africa / world      | -79 800           | -94 920           | +18,9%       | -15 120          |
| BOTSWANA                                | 0                 | 0                 |              |                  |
| EGYPT                                   | 116 683           | 81 731            | -30,0%       | -34 952          |
| KENYA                                   | 660               | 2 945             | +346,2%      | 2 285            |
| LIBYA                                   | 0                 | 0                 |              |                  |
| MOROCCO                                 | 42 066            | 59 477            | +41,4%       | 17 411           |
| NIGERIA                                 | 0                 | 0                 |              |                  |
| SOUTH AFRICA                            | 472 049           | 532 545           | +12,8%       | 60 496           |
| SUDAN                                   | 0                 | 0                 |              |                  |
| TUNISIA                                 | 2 801             | 1 860             | -33,6%       | -941             |
| ZIMBABWE                                | 257               | 829               | +222,6%      | 572              |
| OTHERS                                  |                   |                   |              | #VALEUR!         |
| <b>TOTAL</b>                            | <b>77 583 519</b> | <b>80 045 075</b> | <b>+3,2%</b> | <b>2 461 556</b> |

(1) Official car figures include Belgian GM assembly.

(2) Official figures take account of Swedish manufacturers world production: in this report, we only use the vehicles produced in Sweden, and the vehicles for which Volvo Trucks does not specify the country of production.

Estimate

As of 2011, some EU countries do not give HCV and Heavy buses figures any more.

**WORLD MOTOR VEHICLE PRODUCTION BY  
COUNTRY AND TYPE**

OICA correspondents survey

| UNITS                                   | YTD 2010          | YTD 2011          |               |
|---|-------------------|-------------------|---------------|
| CARS                                    | Q4                | Q4                | VARIATION     |
| <b>EUROPE</b>                           | <b>17 239 732</b> | <b>18 279 084</b> | <b>+6,0%</b>  |
| - EUROPEAN UNION 27 countries           | 15 260 094        | 15 708 191        | +2,9%         |
| - EUROPEAN UNION 15 countries           | 12 110 446        | 12 445 044        | +2,8%         |
| Double Counts Austria / Germany         |                   |                   |               |
| Double Counts Belgium / Germany         | -80 150           | -85 000           | +6,1%         |
| Double Counts Italy / EU                | -4 346            | -6 570            | +51,2%        |
| Double Counts Portugal / Japan          |                   |                   |               |
| Double Counts Portugal / Spain          |                   |                   |               |
| AUSTRIA                                 | 86 183            | 130 343           | +51,2%        |
| BELGIUM                                 | 528 996           | 560 779           | +6,0%         |
| FINLAND                                 | 6 385             | 2 540             | -60,2%        |
| FRANCE                                  | 1 924 171         | 1 931 030         | +0,4%         |
| GERMANY(1)                              | 5 552 409         | 5 871 918         | +5,8%         |
| ITALY                                   | 573 169           | 485 606           | -15,3%        |
| NETHERLANDS                             | 48 025            | 40 772            | -15,1%        |
| PORTUGAL                                | 114 563           | 141 779           | +23,8%        |
| SPAIN                                   | 1 913 513         | 1 839 068         | -3,9%         |
| SWEDEN (2)                              | 177 084           | 188 969           | +6,7%         |
| UNITED KINGDOM                          | 1 270 444         | 1 343 810         | +5,8%         |
| - EUROPEAN UNION New Members            | <b>3 149 648</b>  | <b>3 263 147</b>  | <b>+3,6%</b>  |
| Double Counts Slovakia / Czech republic | 0                 |                   |               |
| Double Counts Slovakia / Germany        | 0                 |                   |               |
| CZECH REPUBLIC                          | 1 069 518         | 1 191 968         | +11,4%        |
| HUNGARY                                 | 208 571           | 211 218           | +1,3%         |
| POLAND                                  | 785 000           | 741 000           | -5,6%         |
| ROMANIA                                 | 323 587           | 310 243           | -4,1%         |
| SLOVAKIA                                | 561 933           | 639 763           | +13,9%        |
| SLOVENIA                                | 201 039           | 168 955           | -16,0%        |
| - OTHER EUROPE                          | <b>1 376 244</b>  | <b>1 931 159</b>  | <b>+40,3%</b> |
| SERBIA                                  | 14 551            | 10 227            | -29,7%        |
| CIS                                     | <b>1 361 693</b>  | <b>1 920 932</b>  | <b>+41,1%</b> |
| Double Counts Ukraine / World           | -52 330           | -67 050           | +28,1%        |
| RUSSIA                                  | 1 208 362         | 1 744 097         | +44,3%        |
| BELARUS                                 |                   |                   |               |
| UKRAINE                                 | 75 261            | 97 585            | +29,7%        |
| UZBEKISTAN                              | 130 400           | 146 300           | +12,2%        |
| TURKEY                                  | <b>603 394</b>    | <b>639 734</b>    | <b>+6,0%</b>  |
| <b>AMERICA</b>                          | <b>8 228 067</b>  | <b>8 761 800</b>  | <b>+6,5%</b>  |
| - NAFTA                                 | <b>5 084 330</b>  | <b>5 624 553</b>  | <b>+10,6%</b> |
| CANADA                                  | 967 077           | 990 482           | +2,4%         |
| MEXICO                                  | 1 386 148         | 1 657 080         | +19,5%        |
| USA                                     | 2 731 105         | 2 976 991         | +9,0%         |
| - SOUTH AMERICA                         | <b>3 143 737</b>  | <b>3 137 247</b>  | <b>-0,2%</b>  |
| Double counts Venezuela / World         | -60 308           | -56 520           | -6,3%         |
| ARGENTINA                               | 508 401           | 577 233           | +13,5%        |
| BRAZIL                                  | 2 584 690         | 2 519 389         | -2,5%         |
| CHILE                                   |                   |                   |               |
| COLOMBIA                                | 37 197            | 28 030            | -24,6%        |
| ECUADOR                                 |                   |                   |               |
| PERU                                    |                   |                   |               |
| URUGUAY                                 |                   |                   |               |
| VENEZUELA                               | 73 757            | 69 115            | -6,3%         |
| <b>ASIA-OCEANIA</b>                     | <b>32 414 823</b> | <b>32 480 804</b> | <b>+0,2%</b>  |
| Double Counts Asia / world              |                   |                   |               |
| Double Counts China / world             | -114 774          | -119 670          | +4,3%         |
| Double Counts Thailand / world          |                   |                   |               |
| AUSTRALIA                               | 205 334           | 189 503           | -7,7%         |
| CHINA                                   | 13 897 083        | 14 485 326        | +4,2%         |
| INDIA                                   | 2 831 542         | 3 040 144         | +7,4%         |
| INDONESIA                               | 496 524           | 562 250           | +13,2%        |
| IRAN                                    | 1 367 014         | 1 412 803         | +3,3%         |
| JAPAN                                   | 8 310 362         | 7 158 525         | -13,9%        |
| MALAYSIA                                | 522 568           | 488 441           | -6,5%         |
| PAKISTAN                                | 130 625           | 139 700           | +6,9%         |
| PHILIPPINES                             | 56 128            | 45 751            | -18,5%        |
| SOUTH KOREA                             | 3 866 206         | 4 221 617         | +9,2%         |
| TAIWAN                                  | 251 490           | 288 523           | +14,7%        |
| THAILAND                                | 554 387           | 537 987           | -3,0%         |
| VIETNAM                                 | 40 334            | 29 904            | -25,9%        |
| <b>AFRICA</b>                           | <b>356 872</b>    | <b>375 585</b>    | <b>+5,2%</b>  |
| Double Counts Egypt / world             | -26 790           | -18 610           | -30,5%        |
| Double Counts South Africa / world      | -23 690           | -25 780           | +8,8%         |
| BOTSWANA                                |                   |                   |               |
| EGYPT                                   | 76 412            | 53 072            | -30,5%        |
| KENYA                                   |                   |                   |               |
| LIBYA                                   |                   |                   |               |
| MOROCCO                                 | 35 546            | 54 638            | +53,7%        |
| NIGERIA                                 |                   |                   |               |
| SOUTH AFRICA                            | 295 394           | 312 265           | +5,7%         |
| SUDAN                                   |                   |                   |               |
| TUNISIA                                 |                   |                   |               |
| ZIMBABWE                                |                   |                   |               |
| <b>OTHERS</b>                           |                   |                   |               |
| <b>TOTAL</b>                            | <b>58 239 494</b> | <b>59 897 273</b> | <b>+2,8%</b>  |

(1) Official car figures include Belgian GM assembly.

(2) Official figures take account of Swedish manufacturers world production; in this report, we only use the vehicles produced in Sweden, and the vehicles for which Volvo Trucks does not specify the country of production.

Estimate

WORLD MOTOR VEHICLE PRODUCTION BY  
COUNTRY AND TYPE

OICA correspondents survey

THE EU PERIMETER CHANGES IN 2011

| UNITS                                   | YTD 2010          | YTD 2011          |               |
|---|-------------------|-------------------|---------------|
| LIGHT COMMERCIAL VEHICLES               | Q4                | Q4                | VARIATION     |
| <b>EUROPE</b>                           | <b>2 019 999</b>  | <b>2 288 582</b>  | <b>+13,3%</b> |
| - EUROPEAN UNION 27 countries           | 1 408 038         | 1 604 589         | +14,0%        |
| - EUROPEAN UNION 15 countries           | 1 293 750         | 1 481 230         | +14,5%        |
| Double Counts Austria / Germany         |                   |                   |               |
| Double Counts Austria / Japan           |                   |                   |               |
| Double Counts Belgium / Germany         |                   |                   |               |
| Double Counts Italy / EU                |                   |                   |               |
| Double Counts Portugal / Japan          | -5 651            | -4 774            | -15,5%        |
| Double Counts Portugal / Spain          |                   |                   |               |
| AUSTRIA                                 |                   |                   |               |
| BELGIUM                                 |                   |                   |               |
| FINLAND                                 |                   |                   |               |
| FRANCE                                  | 262 479           | 311 898           | +18,8%        |
| GERMANY                                 | 212 511           | 275 035           | +29,4%        |
| ITALY                                   | 236 004           | 270 342           | +14,5%        |
| NETHERLANDS                             |                   |                   |               |
| PORTUGAL                                | 39 770            | 46 385            | +16,6%        |
| SPAIN                                   | 437 242           | 479 330           | +9,6%         |
| SWEDEN (1)                              |                   |                   |               |
| UNITED KINGDOM                          | 111 395           | 103 014           | -7,5%         |
| - EUROPEAN UNION New Members            | 114 288           | 123 359           | +7,9%         |
| Double Counts Slovakia / Czech republic |                   |                   |               |
| Double Counts Slovakia / Germany        |                   |                   |               |
| CZECH REPUBLIC                          | 2 745             | 3 013             | +9,8%         |
| HUNGARY                                 |                   |                   |               |
| POLAND                                  | 73 972            | 90 258            | +22,0%        |
| ROMANIA                                 | 27 270            | 24 924            | -8,6%         |
| SLOVAKIA                                |                   |                   |               |
| SLOVENIA                                | 10 301            | 5 164             | -49,9%        |
| - OTHER EUROPE                          | 152 575           | 182 408           | +19,6%        |
| SERBIA                                  | 530               | 555               | +4,7%         |
| CIS                                     | 152 045           | 181 853           | +19,6%        |
| Double Counts Ukraine / World           |                   |                   |               |
| RUSSIA                                  | 121 528           | 146 309           | +20,4%        |
| BELARUS                                 |                   |                   |               |
| UKRAINE                                 | 4 037             | 2 284             | -43,4%        |
| UZBEKISTAN                              | 26 480            | 33 260            | +25,6%        |
| TURKEY                                  | 459 386           | 501 585           | +9,2%         |
| <b>AMERICA</b>                          | <b>7 596 944</b>  | <b>8 323 723</b>  | <b>+9,6%</b>  |
| - NAFTA                                 | 6 825 889         | 7 462 534         | +9,3%         |
| CANADA                                  | 1 095 482         | 1 134 758         | +3,6%         |
| MEXICO                                  | 864 365           | 886 279           | +2,5%         |
| USA                                     | 4 866 042         | 5 441 497         | +11,8%        |
| - SOUTH AMERICA                         | 771 055           | 861 189           | +11,7%        |
| Double counts Venezuela / World         | -16 683           | -18 770           | +12,5%        |
| ARGENTINA                               | 187 225           | 227 182           | +21,3%        |
| BRAZIL                                  | 566 567           | 615 711           | +8,7%         |
| CHILE                                   |                   |                   |               |
| COLOMBIA                                |                   |                   |               |
| ECUADOR                                 | 8 948             | 8 948             | +0,0%         |
| PERU                                    |                   |                   |               |
| URUGUAY                                 |                   |                   |               |
| VENEZUELA                               | 24 998            | 28 118            | +12,5%        |
| <b>ASIA-OCEANIA</b>                     | <b>5 008 038</b>  | <b>4 865 927</b>  | <b>-2,8%</b>  |
| Double Counts Asia / world              |                   |                   |               |
| Double Counts China / world             |                   |                   |               |
| Double Counts Thailand / world          |                   |                   |               |
| AUSTRALIA                               | 34 109            | 29 873            | -12,4%        |
| CHINA                                   | 1 946 820         | 1 845 372         | -5,2%         |
| INDIA                                   | 395 253           | 511 164           | +29,3%        |
| INDONESIA                               | 101 648           | 151 421           | +49,0%        |
| IRAN                                    | 196 752           | 200 012           | +1,7%         |
| JAPAN                                   | 787 612           | 718 418           | -8,8%         |
| MALAYSIA                                | 39 682            | 38 114            | -4,0%         |
| PAKISTAN                                | 18 431            | 19 752            | +7,2%         |
| PHILIPPINES                             |                   | 58                |               |
| SOUTH KOREA (2)                         | 367 150           | 397 685           | +8,3%         |
| TAIWAN                                  | 47 200            | 49 176            | +4,2%         |
| THAILAND                                | 1 073 381         | 904 882           | -15,7%        |
| VIETNAM                                 |                   |                   |               |
| <b>AFRICA</b>                           | <b>124 832</b>    | <b>148 221</b>    | <b>+18,7%</b> |
| Double Counts Egypt / world             | -12 850           | -9 220            | -28,2%        |
| Double Counts South Africa / world      | -47 880           | -58 860           | +22,9%        |
| BOTSWANA                                |                   |                   |               |
| EGYPT                                   | 22 211            | 15 944            | -28,2%        |
| KENYA                                   |                   |                   |               |
| LIBYA                                   |                   |                   |               |
| MOROCCO                                 | 6 520             | 4 839             | -25,8%        |
| NIGERIA                                 |                   |                   |               |
| SOUTH AFRICA                            | 153 773           | 192 829           | +25,4%        |
| SUDAN                                   |                   |                   |               |
| TUNISIA                                 | 2 801             | 1 860             | -33,6%        |
| ZIMBABWE                                | 257               | 829               | +222,6%       |
| <b>OTHERS</b>                           |                   |                   |               |
| <b>TOTAL</b>                            | <b>14 749 813</b> | <b>15 626 453</b> | <b>+5,9%</b>  |

(1) Official figures take account of Swedish manufacturers world production; in this report, we only use the vehicles produced in Sweden, and the vehicles for which Volvo Trucks does not specify the country of production.

(2) Distribution of commercial vehicles is derived from KAMA's OICA exchange files.  
Estimate

| UNITS                                   | YTD 2010         | YTD 2011            |               |
|---|------------------|---------------------|---------------|
| HEAVY TRUCKS                            | Q4               | Q4                  | VARIATION     |
| <b>EUROPE</b>                           | <b>476 051</b>   | <b>505 112</b>      | <b>+6,1%</b>  |
| - EUROPEAN UNION 27 countries           | 377 737          | 359 564             | -4,8%         |
| - EUROPEAN UNION 15 countries           | 367 576          | 354 068             | -3,7%         |
| Double Counts Austria / Germany         |                  |                     |               |
| Double Counts Austria / Japan           |                  |                     |               |
| Double Counts Belgium / Germany         |                  |                     |               |
| Double Counts Italy / EU                |                  |                     |               |
| Double Counts Portugal / Japan          | -4 326           | -4 073              | -5,8%         |
| Double Counts Portugal / Spain          |                  |                     |               |
| AUSTRIA                                 | 18 814           | 22 162              | +17,8%        |
| BELGIUM                                 | 25 338           | 33 246              | +31,2%        |
| FINLAND                                 | 280              | 91                  | -67,5%        |
| FRANCE                                  | 39 296           | publication stopped |               |
| GERMANY                                 | 134 129          | 164 150             | +22,4%        |
| ITALY                                   | 27 948           | 33 577              | +20,1%        |
| NETHERLANDS                             | 44 764           | 30 944              | -30,9%        |
| PORTUGAL                                | 4 326            | 4 073               | -5,8%         |
| SPAIN                                   | 36 891           | 54 550              | +47,9%        |
| SWEDEN (1)                              | 30 000           | publication stopped |               |
| UNITED KINGDOM                          | 10 116           | 15 348              | +51,7%        |
| - EUROPEAN UNION New Members            | 10 161           | 5 496               | -45,9%        |
| Double Counts Slovakia / Czech republic |                  |                     |               |
| Double Counts Slovakia / Germany        |                  |                     |               |
| CZECH REPUBLIC                          | 1 410            | 1 302               | -7,7%         |
| HUNGARY                                 | 2 760            | 2 313               | -16,2%        |
| POLAND                                  | 5 936            | 1 816               | -69,4%        |
| ROMANIA                                 | 55               | 65                  | +18,2%        |
| SLOVAKIA                                |                  |                     |               |
| SLOVENIA                                |                  |                     |               |
| - OTHER EUROPE                          | 74 463           | 108 152             | +45,2%        |
| SERBIA                                  | 97               | 109                 | +12,4%        |
| CIS                                     | 74 366           | 108 043             | +45,3%        |
| Double Counts Ukraine / World           |                  |                     |               |
| RUSSIA                                  | 60 071           | 85 153              | +41,8%        |
| BELARUS                                 | 13 203           | 21 843              | +65,4%        |
| UKRAINE                                 | 1 092            | 1 047               | -4,1%         |
| UZBEKISTAN                              |                  |                     |               |
| TURKEY                                  | 23 851           | 37 396              | +56,8%        |
| <b>AMERICA</b>                          | <b>475 560</b>   | <b>655 599</b>      | <b>+37,9%</b> |
| - NAFTA                                 | 243 345          | 390 619             | +60,5%        |
| CANADA                                  | 5 630            | 9 881               | +75,5%        |
| MEXICO                                  | 91 769           | 137 691             | +50,0%        |
| USA                                     | 145 946          | 243 047             | +66,5%        |
| - SOUTH AMERICA                         | 232 215          | 264 980             | +14,1%        |
| Double counts Venezuela / World         |                  |                     |               |
| ARGENTINA                               | 18 585           | 21 042              | +13,2%        |
| BRAZIL                                  | 189 941          | 223 388             | +17,6%        |
| CHILE                                   | 4 700            |                     | -100,0%       |
| COLOMBIA                                |                  |                     |               |
| ECUADOR                                 | 13 387           | 15 374              | +14,8%        |
| PERU                                    |                  |                     |               |
| URUGUAY                                 |                  |                     |               |
| VENEZUELA                               | 5 602            | 5 176               | -7,6%         |
| <b>ASIA-OCEANIA</b>                     | <b>3 259 997</b> | <b>2 985 168</b>    | <b>-8,4%</b>  |
| Double Counts Asia / world              |                  |                     |               |
| Double Counts China / world             |                  |                     |               |
| Double Counts Thailand / world          |                  |                     |               |
| AUSTRALIA                               | 4 564            | 4 817               | +5,5%         |
| CHINA                                   | 2 259 161        | 1 923 839           | -14,8%        |
| INDIA                                   | 275 662          | 325 775             | +18,2%        |
| INDONESIA                               | 100 230          | 120 522             | +20,2%        |
| IRAN                                    | 32 929           | 33 789              | +2,6%         |
| JAPAN                                   | 520 672          | 512 260             | -1,6%         |
| MALAYSIA                                | 4 384            | 6 012               | +37,1%        |
| PAKISTAN                                | 3 364            | 2 276               | -32,3%        |
| PHILIPPINES                             | 9 497            | 8 112               | -14,6%        |
| SOUTH KOREA (2)                         | 26 558           | 26 426              | -0,5%         |
| TAIWAN                                  | 4 766            | 5 597               | +17,4%        |
| THAILAND                                | 16 258           | 14 466              | -11,0%        |
| VIETNAM                                 | 1 952            | 1 277               | -34,6%        |
| <b>AFRICA</b>                           | <b>22 679</b>    | <b>25 771</b>       | <b>+13,6%</b> |
| Double Counts Egypt / world             |                  |                     |               |
| Double Counts South Africa / world      | -8 230           | -10 280             | +24,9%        |
| BOTSWANA                                |                  |                     |               |
| EGYPT                                   | 9 120            | 6 735               | -26,2%        |
| KENYA                                   | 660              | 2 945               | +346,2%       |
| LIBYA                                   |                  |                     |               |
| MOROCCO                                 |                  |                     |               |
| NIGERIA                                 |                  |                     |               |
| SOUTH AFRICA                            | 21 129           | 26 371              | +24,8%        |
| SUDAN                                   |                  |                     |               |
| TUNISIA                                 |                  |                     |               |
| ZIMBABWE                                |                  |                     |               |
| <b>OTHERS</b>                           |                  |                     |               |
| <b>TOTAL</b>                            | <b>4 234 287</b> | <b>4 171 650</b>    | <b>-1,5%</b>  |

(1) Official figures take account of Swedish manufacturers world production: in this report, we only use the vehicles produced in Sweden, and the vehicles for which Volvo Trucks does not specify the country of production..

(2) Distribution of commercial vehicles is derived from KAMA's OICA exchange files.

Estimate

As of 2011, some EU countries do not give HCV and Heavy buses figures any more.

| UNITS                                   | YTD 2010       | YTD 2011            |               |
|---|----------------|---------------------|---------------|
| HEAVY BUSES                             | Q4             | Q4                  | VARIATION     |
| <b>EUROPE</b>                           | <b>58 976</b>  | <b>45 533</b>       | <b>-22,8%</b> |
| - EUROPEAN UNION 27 countries           | 32 956         | 14 151              | -57,1%        |
| - EUROPEAN UNION 15 countries           | 25 549         | 5 530               | -78,4%        |
| Double Counts Austria / Germany         |                |                     |               |
| Double Counts Austria / Japan           |                |                     |               |
| Double Counts Belgium / Germany         |                |                     |               |
| Double Counts Italy / EU                |                |                     |               |
| Double Counts Portugal / Japan          | -70            | 0                   | -100,0%       |
| Double Counts Portugal / Spain          |                |                     |               |
| AUSTRIA                                 |                |                     |               |
| BELGIUM                                 | 968            | 1 059               | +9,4%         |
| FINLAND                                 |                |                     |               |
| FRANCE                                  | 3 475          | publication stopped |               |
| GERMANY                                 | 6 936          | publication stopped |               |
| ITALY                                   | 1 065          | 823                 | -22,7%        |
| NETHERLANDS                             | 1 343          | 1 435               | +6,9%         |
| PORTUGAL                                | 70             | 5                   | -92,9%        |
| SPAIN                                   | 254            | 381                 | +50,0%        |
| SWEDEN (1)                              | 10 000         | publication stopped |               |
| UNITED KINGDOM                          | 1 508          | 1 827               | +21,2%        |
| - EUROPEAN UNION New Members            | 7 407          | 8 621               | +16,4%        |
| Double Counts Slovakia / Czech republic | 0              |                     |               |
| Double Counts Slovakia / Germany        | 0              |                     |               |
| CZECH REPUBLIC                          | 2 711          | 3 562               | +31,4%        |
| HUNGARY                                 | 130            |                     |               |
| POLAND                                  | 4 566          | 5 059               | +10,8%        |
| ROMANIA                                 |                |                     |               |
| SLOVAKIA                                |                |                     |               |
| SLOVENIA                                |                |                     |               |
| - OTHER EUROPE                          | 18 094         | 20 966              | +15,9%        |
| SERBIA                                  | 22             | 132                 | +500,0%       |
| CIS                                     | 18 072         | 20 834              | +15,3%        |
| Double Counts Ukraine / World           |                |                     |               |
| RUSSIA                                  | 13 283         | 14 596              | +9,9%         |
| BELARUS                                 | 2 046          | 2 500               | +22,2%        |
| UKRAINE                                 | 2 743          | 3 738               | +36,3%        |
| UZBEKISTAN                              |                |                     |               |
| TURKEY                                  | 7 926          | 10 416              | +31,4%        |
| <b>AMERICA</b>                          | <b>42 859</b>  | <b>52 687</b>       | <b>+22,9%</b> |
| - NAFTA                                 | 0              | 0                   |               |
| CANADA                                  |                |                     |               |
| MEXICO                                  |                |                     |               |
| USA                                     | 0              | 0                   |               |
| - SOUTH AMERICA                         | 42 859         | 52 687              | +22,9%        |
| Double counts Venezuela / World         |                |                     |               |
| ARGENTINA                               | 2 329          | 3 314               | +42,3%        |
| BRAZIL                                  | 40 530         | 49 373              | +21,8%        |
| CHILE                                   |                |                     |               |
| COLOMBIA                                |                |                     |               |
| ECUADOR                                 |                |                     |               |
| PERU                                    |                |                     |               |
| URUGUAY                                 |                |                     |               |
| VENEZUELA                               | 0              |                     |               |
| <b>ASIA-OCEANIA</b>                     | <b>247 397</b> | <b>244 419</b>      | <b>-1,2%</b>  |
| Double Counts Asia / world              |                |                     |               |
| Double Counts China / world             |                |                     |               |
| Double Counts Thailand / world          |                |                     |               |
| AUSTRALIA                               |                |                     |               |
| CHINA                                   | 161 697        | 164 339             | +1,6%         |
| INDIA                                   | 54 616         | 50 328              | -7,9%         |
| INDONESIA                               | 4 106          | 4 195               | +2,2%         |
| IRAN                                    | 2 759          | 2 707               | -1,9%         |
| JAPAN                                   | 10 274         | 9 427               | -8,2%         |
| MALAYSIA                                | 1 081          | 1 128               | +4,3%         |
| PAKISTAN                                | 550            | 466                 | -15,3%        |
| PHILIPPINES                             |                |                     |               |
| SOUTH KOREA (2)                         | 11 827         | 11 366              | -3,9%         |
| TAIWAN                                  |                |                     |               |
| THAILAND                                | 487            | 463                 | -4,9%         |
| VIETNAM                                 |                |                     |               |
| <b>AFRICA</b>                           | <b>10 693</b>  | <b>7 060</b>        | <b>-34,0%</b> |
| Double Counts Egypt / world             |                |                     |               |
| Double Counts South Africa / world      |                |                     |               |
| BOTSWANA                                |                |                     |               |
| EGYPT                                   | 8 940          | 5 980               | -33,1%        |
| KENYA                                   |                |                     |               |
| LIBYA                                   |                |                     |               |
| MOROCCO                                 |                |                     |               |
| NIGERIA                                 |                |                     |               |
| SOUTH AFRICA                            | 1 753          | 1 080               | 0             |
| SUDAN                                   |                |                     |               |
| TUNISIA                                 |                |                     |               |
| ZIMBABWE                                |                |                     |               |
| <b>OTHERS</b>                           |                |                     |               |
| <b>TOTAL</b>                            | <b>359 925</b> | <b>349 699</b>      | <b>-2,8%</b>  |

(1) Official figures take account of Swedish manufacturers world production; in this report, we only use the vehicles produced in Sweden, and the vehicles for which Volvo Trucks does not specify the country of production.

(2) Distribution of commercial vehicles is derived from KAMA's OICA exchange files.

Estimate

As of 2011, some EU countries do not give HCV and Heavy buses figures any more.



**WORLD MOTOR VEHICLES PRODUCTION  
BY MANUFACTURER, COUNTRY AND TYPE;  
WORLD RANKING 2011**

# CONTENTS

## WORLD RANKING OF MANUFACTURERS IN 2011

### LIST OF MANUFACTURERS: (China and Malaysia are minus joint ventures)

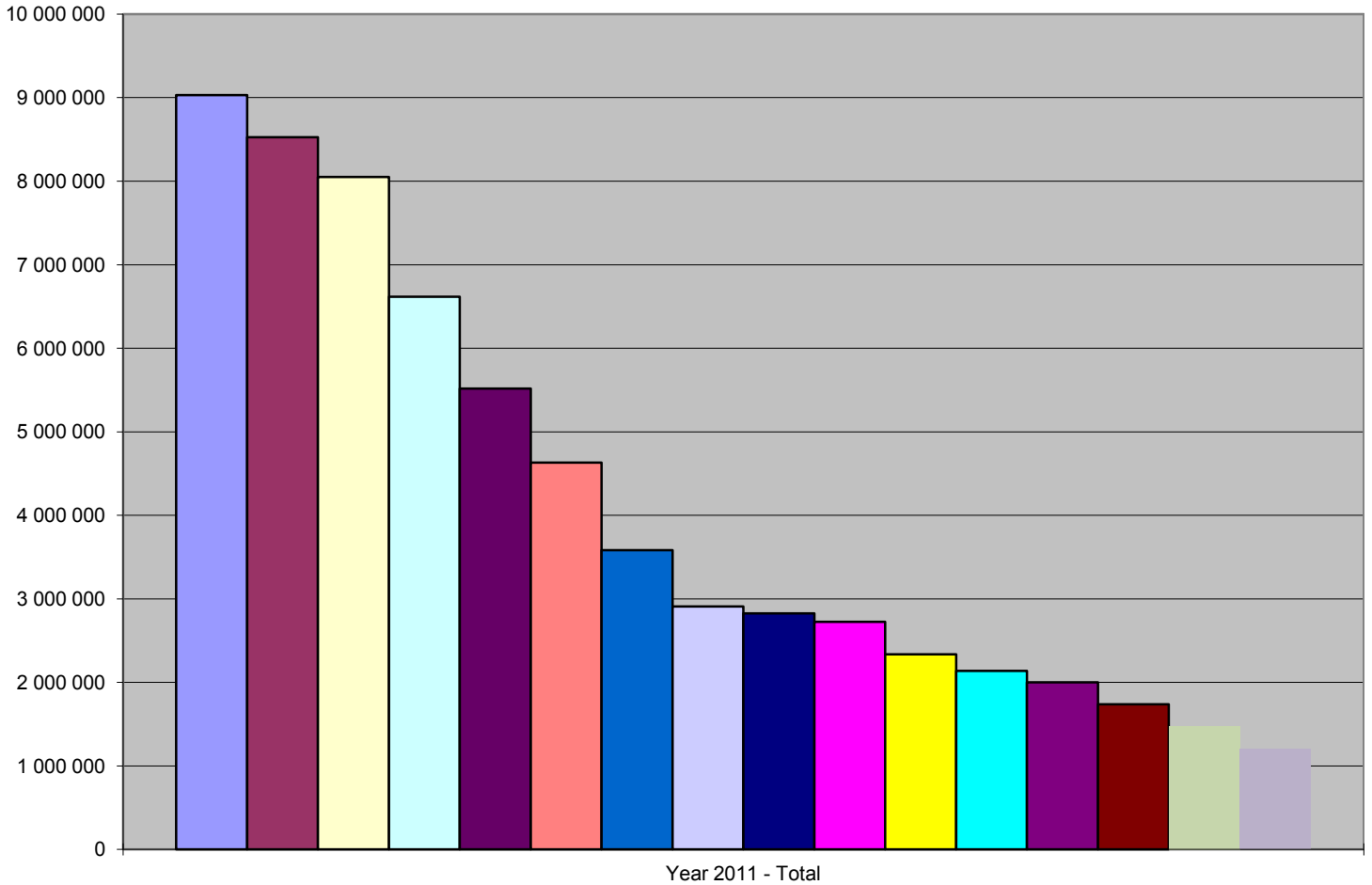
|   |                     |
|---|---------------------|
| ASHOK LEYLAND                               | IRAN KHODRO         |
| AVTOVAZ                                     | ISUZU               |
| B.M.W.                                      | JAC                 |
| BAIC  | M.A.N.              |
| BRILLIANCE                                  | MAHINDRA            |
| BYD   | MAZDA               |
| CHANGAN                                     | MITSUBISHI          |
| CHERY                                       | NAVISTAR            |
| CHINA NATIONAL HEAVY DUTY TRUCK             | NISSAN              |
| CHONGQING LIFAN MOTOR CO.                   | PACCAR              |
| CHRYSLER                                    | PORSCHE             |
| DAIMLER AG                                  | PROTON              |
| DONGFENG MOTOR                              | PSA                 |
| FAW   | RENAULT             |
| FIAT  | SAIC                |
| FORD  | SAIPA               |
| FUJI  | SHANNXI             |
| G.M.  | SICHUAN NANJUN      |
| GAZ   | SOUTH EAST (FUJIAN) |
| GEELY                                       | SUZUKI              |
| GREAT WALL                                  | TATA                |
| GUANGZHOU AUTO INDUSTRY                     | TOYOTA              |
| HONDA                                       | VOLKSWAGEN          |
| HUNAN JIANGNAN AUTOMOBILE MANUFACTURING CO. | VOLVO               |
| HYUNDAI                                     | XIAMEN KING LONG    |

**WORLD MOTOR VEHICLE PRODUCTION**  
**OICA correspondents survey**

**WORLD RANKING OF MANUFACTURERS**

| Rank | GROUP                                       | Year 2011 |           |           |         |           |
|------|---|-----------|-----------|-----------|---------|-----------|
|      |   | Total     | CARS      | LCV       | HCV     | HEAVY BUS |
| 1    | G.M.  | 9 031 670 | 6 494 385 | 2 520 559 | 7 064   | 9 662     |
| 2    | VOLKSWAGEN                                  | 8 525 573 | 8 157 058 | 284 515   | 84 000  |           |
| 3    | TOYOTA                                      | 8 050 181 | 6 793 714 | 1 037 138 | 214 375 | 4 954     |
| 4    | HYUNDAI                                     | 6 616 858 | 6 118 221 | 409 355   | 72 993  | 16 289    |
| 5    | FORD  | 5 516 931 | 3 093 893 | 2 328 454 | 94 584  |           |
| 6    | NISSAN                                      | 4 631 673 | 3 581 445 | 998 417   | 51 811  |           |
| 7    | PSA   | 3 582 410 | 3 161 955 | 420 455   |         |           |
| 8    | HONDA                                       | 2 909 016 | 2 886 343 | 22 673    |         |           |
| 9    | RENAULT                                     | 2 825 089 | 2 443 040 | 382 049   |         |           |
| 10   | SUZUKI                                      | 2 725 899 | 2 337 237 | 388 662   |         |           |
| 11   | FIAT  | 2 336 954 | 1 741 652 | 486 268   | 67 170  | 41 864    |
| 12   | DAIMLER AG                                  | 2 137 067 | 1 443 419 | 253 879   | 379 577 | 60 192    |
| 13   | CHRYSLER                                    | 1 999 017 | 502 020   | 1 488 197 | 8 800   |           |
| 14   | B.M.W.                                      | 1 738 160 | 1 738 160 |           |         |           |
| 15   | SAIC  | 1 478 502 | 1 292 296 | 126 963   | 56 514  | 2 729     |
| 16   | TATA  | 1 197 192 | 658 241   | 305 897   | 213 450 | 19 604    |
| 17   | CHANGAN                                     | 1 167 208 | 850 631   | 261 350   | 53 302  | 1 925     |
| 18   | MAZDA                                       | 1 165 591 | 1 103 632 | 61 959    |         |           |
| 19   | MITSUBISHI                                  | 1 140 282 | 1 016 876 | 119 976   | 3 430   |           |
| 20   | DONGFENG MOTOR                              | 1 108 949 | 410 626   | 254 824   | 427 629 | 15 870    |
| 21   | GEELY                                       | 897 107   | 897 107   |           |         |           |
| 22   | FAW   | 883 963   | 619 535   | 49 445    | 211 067 | 3 916     |
| 23   | SAIPA                                       | 739 003   | 678 152   | 59 970    | 881     |           |
| 24   | BAIC  | 689 635   | 33 374    | 287 770   | 365 147 | 3 344     |
| 25   | CHERY                                       | 637 423   | 629 386   | 8 037     |         |           |
| 26   | FUJI  | 580 261   | 528 234   | 52 027    |         |           |
| 27   | AVTOVAZ                                     | 562 347   | 562 347   |           |         |           |
| 28   | MAHINDRA                                    | 499 808   | 345 062   | 152 602   | 2 020   | 124       |
| 29   | GREAT WALL                                  | 486 562   | 366 452   | 120 110   |         |           |
| 30   | JAC   | 485 856   | 218 352   | 100 409   | 154 921 | 12 174    |
| 31   | ISUZU                                       | 480 889   |           | 31 191    | 447 359 | 2 339     |
| 32   | BRILLIANCE                                  | 455 537   | 188 336   | 231 717   | 35 484  |           |
| 33   | BYD   | 449 425   | 449 425   |           |         |           |
| 34   | VOLVO                                       | 251 190   |           |           | 238 400 | 12 790    |
| 35   | IRAN KHODRO                                 | 239 124   | 124 815   | 113 007   | 1 302   |           |
| 36   | CHONGQING LIFAN MOTOR CO.                   | 205 846   | 124 228   | 28 297    | 53 321  |           |
| 37   | PROTON                                      | 172 156   | 143 052   | 29 104    |         |           |
| 38   | CHINA NATIONAL HEAVY DUTY TRUCK             | 151 718   |           | 1 086     | 150 198 | 434       |
| 39   | HUNAN JIANGNAN AUTOMOBILE MANUFACTURING CO. | 137 937   | 137 937   |           |         |           |
| 40   | PORSCHE                                     | 127 020   | 127 020   |           |         |           |
| 41   | GAZ   | 124 456   | 1         | 84 181    | 25 965  | 14 309    |
| 42   | PACCAR                                      | 121 235   |           |           | 121 235 |           |
| 43   | SHANXI                                      | 107 239   | 9 524     | 3         | 96 686  | 1 026     |
| 44   | ASHOK LEYLAND                               | 96 170    |           | 4 131     | 69 167  | 22 872    |
| 45   | GUANGZHOU AUTO INDUSTRY                     | 91 844    | 78 124    | 12 995    |         | 725       |
| 46   | NAVISTAR                                    | 88 849    |           |           | 79 362  | 9 487     |
| 47   | M.A.N.                                      | 84 803    |           |           | 78 752  | 6 051     |
| 48   | SOUTH EAST (FUJIAN)                         | 78 452    | 73 872    | 4 580     |         |           |
| 49   | SICHUAN NANJUN                              | 73 905    |           | 22 099    | 50 271  | 1 535     |
| 50   | XIAMEN KING LONG                            | 71 167    |           | 29 388    |         | 41 779    |

## WORLD MOTOR VEHICLE PRODUCTION OICA correspondents survey



|               |                |            |                 |
|---------------|----------------|------------|-----------------|
| 1 - G.M.      | 2 - VOLKSWAGEN | 3 - TOYOTA | 4 - HYUNDAI     |
| 5 - FORD      | 6 - NISSAN     | 7 - PSA    | 8 - HONDA       |
| 9 - RENAULT   | 10 - SUZUKI    | 11 - FIAT  | 12 - DAIMLER AG |
| 13 - CHRYSLER | 14 - B.M.W.    | 15 - SAIC  | 16 - TATA       |

**WORLD MOTOR VEHICLE PRODUCTION**  
**OICA correspondents survey**

**GROUP : ASHOK LEYLAND**

|             |              |                      | Year 2011    |               |               |               |
|-------------|--------------|----------------------|--------------|---------------|---------------|---------------|
| CONTINENT   | COUNTRY      | MAKE                 | LCV          | HCV           | HEAVY BUS     | Total         |
| <b>ASIA</b> | <b>India</b> | <b>ASHOK LEYLAND</b> | <b>4 131</b> | <b>69 167</b> | <b>22 872</b> | <b>96 170</b> |

**WORLD MOTOR VEHICLE PRODUCTION  
OICA correspondents survey**

**GROUP : AVTOVAZ**

|           |         |              | Year 2011      |                |
|-----------|---------|--------------|----------------|----------------|
| CONTINENT | COUNTRY | MAKE         | CARS           | Total          |
| EUROPE    | Russia  | AVTOVAZ      | 561 669        | 561 669        |
|           |         | CHECHENAUTO  | 678            | 678            |
|           |         | <b>Total</b> | <b>562 347</b> | <b>562 347</b> |

**WORLD MOTOR VEHICLE PRODUCTION  
OICA correspondents survey**

**GROUP : B.M.W.**

|                |                     |               | Year 2011        |                  |
|----------------|---------------------|---------------|------------------|------------------|
| CONTINENT      | COUNTRY             | MAKE          | CARS             | Total            |
| <b>AFRICA</b>  | <b>South Africa</b> | <b>B.M.W.</b> | <b>55 926</b>    | <b>55 926</b>    |
| <b>AMERICA</b> | <b>USA</b>          | <b>B.M.W.</b> | <b>280 889</b>   | <b>280 889</b>   |
| <b>ASIA</b>    | <b>China</b>        | <b>B.M.W.</b> | <b>98 241</b>    | <b>98 241</b>    |
| <b>EU</b>      | <b>Austria</b>      | <b>B.M.W.</b> | <b>102 646</b>   | <b>102 646</b>   |
|                | <b>Germany</b>      | <b>B.M.W.</b> | <b>1 005 259</b> | <b>1 005 259</b> |
|                | <b>UK</b>           | <b>B.M.W.</b> | <b>195 199</b>   | <b>195 199</b>   |
|                | <b>Total</b>        |               | <b>1 303 104</b> | <b>1 303 104</b> |
| <b>Total</b>   |                     |               | <b>1 738 160</b> | <b>1 738 160</b> |

**WORLD MOTOR VEHICLE PRODUCTION**  
**OICA correspondents survey**

**GROUP : BAIC**

| CONTINENT COUNTRY |       |   | Year 2011     |                |                |              |                |
|-------------------|-------|---|---------------|----------------|----------------|--------------|----------------|
|                   |       |   | CARS          | LCV            | HCV            | HEAVY BUS    | Total          |
| ASIA              | China | Beijing automobile Co., LTD               | 14 008        |                |                |              | 14 008         |
|                   |       | Beijing automotive manufacturing co., LTD | 11 430        | 18 498         | 28 467         |              | 58 395         |
|                   |       | BEIQI FOTON                               | 7 936         | 269 272        | 336 680        | 3 344        | 617 232        |
|                   |       | <b>Total</b>                              | <b>33 374</b> | <b>287 770</b> | <b>365 147</b> | <b>3 344</b> | <b>689 635</b> |



**WORLD MOTOR VEHICLE PRODUCTION**  
**OICA correspondents survey**

**GROUP : BRILLIANCE**

|             |              |                                  | Year 2011      |                |               |                |
|-------------|--------------|----------------------------------|----------------|----------------|---------------|----------------|
| CONTINENT   | COUNTRY      | MAKE                             | CARS           | LCV            | HCV           | Total          |
| <b>ASIA</b> | <b>China</b> | <b>JINBEI Automotive Co.,Ltd</b> | <b>188 336</b> | <b>231 717</b> | <b>35 484</b> | <b>455 537</b> |

**WORLD MOTOR VEHICLE  
PRODUCTION  
OICA correspondents survey**

***GROUP : BYD***

| CONTINENT COUNTRY MAKE |              |            | Year 2011      |                |
|------------------------|--------------|------------|----------------|----------------|
|                        |              |            | CARS           | Total          |
| <b>ASIA</b>            | <b>China</b> | <b>BYD</b> | <b>449 425</b> | <b>449 425</b> |

**WORLD MOTOR VEHICLE PRODUCTION**  
**OICA correspondents survey**

**GROUP : CHANGAN**

| CONTINENT COUNTRY |       | MAKE   | Year 2011      |                |               |              | Total            |
|-------------------|-------|--|----------------|----------------|---------------|--------------|------------------|
|                   |       |  | CARS           | LCV            | HCV           | HEAVY BUS    |                  |
| ASIA              | China | Baoding Chang'an Bus Co., Ltd.               |                | 1 724          |               | 1 925        | 3 649            |
|                   |       | Chana Automobile (Group) Liability Co., Ltd. | 542 492        | 139 227        |               |              | 681 719          |
|                   |       | Changan Automobile Co., Ltd. Nanjing         | 171 173        |                |               |              | 171 173          |
|                   |       | DONGAN HEIBAO                                |                | 36 331         |               |              | 36 331           |
|                   |       | Hafei Motor Co., Ltd.                        | 75 799         | 46 441         |               |              | 122 240          |
|                   |       | Jiangling Automotive Holding Co., Ltd.       | 23 971         | 13 635         | 50 206        |              | 87 812           |
|                   |       | Jiangxi Changhe Automobile Co., Ltd.         | 37 196         | 23 992         |               |              | 61 188           |
|                   |       | Taiyuan Chana Heavy-Duty Truck Co.,Ltd.      |                |                | 3 096         |              | 3 096            |
|                   |       | <b>Total</b>                                 | <b>850 631</b> | <b>261 350</b> | <b>53 302</b> | <b>1 925</b> | <b>1 167 208</b> |

**WORLD MOTOR VEHICLE PRODUCTION**  
**OICA correspondents survey**

**GROUP : CHERY**

|             |              |              | Year 2011      |              |                |
|-------------|--------------|--------------|----------------|--------------|----------------|
| CONTINENT   | COUNTRY      | MAKE         | CARS           | LCV          | Total          |
| <b>ASIA</b> | <b>China</b> | <b>CHERY</b> | <b>629 386</b> | <b>8 037</b> | <b>637 423</b> |

**WORLD MOTOR VEHICLE PRODUCTION  
OICA correspondents survey**

**GROUP : CHINA NATIONAL HEAVY DUTY TRUCK**

| CONTINENT COUNTRY |              |  | Year 2011    |                |            |                |
|-------------------|--------------|--|--------------|----------------|------------|----------------|
|                   |              |  | LCV          | HCV            | HEAVY BUS  | Total          |
| <b>ASIA</b>       | <b>China</b> | <b>China National Heavy Duty Truck Group Co., Ltd.</b> | <b>1 086</b> | <b>150 198</b> | <b>434</b> | <b>151 718</b> |

**WORLD MOTOR VEHICLE PRODUCTION  
OICA correspondents survey**

**GROUP : CHONGQING LIFAN MOTOR CO.**

| CONTINENT COUNTRY MAKE |              |  | Year 2011      |               |               |                |
|------------------------|--------------|--|----------------|---------------|---------------|----------------|
|                        |              |  | CARS           | LCV           | HCV           | Total          |
| <b>ASIA</b>            | <b>China</b> | <b>Chongqing Lifan Motor Co., Ltd.</b> | <b>124 228</b> | <b>28 297</b> | <b>53 321</b> | <b>205 846</b> |

**WORLD MOTOR VEHICLE PRODUCTION  
OICA correspondents survey**

**GROUP : CHRYSLER**

|                |               |                 | Year 2011      |                  |              |                  |
|----------------|---------------|-----------------|----------------|------------------|--------------|------------------|
| CONTINENT      | COUNTRY       | MAKE            | CARS           | LCV              | HCV          | Total            |
| <b>AMERICA</b> | <b>Canada</b> | <b>CHRYSLER</b> | <b>194 631</b> | <b>301 450</b>   |              | <b>496 081</b>   |
|                | <b>Mexico</b> | <b>CHRYSLER</b> | <b>56 972</b>  | <b>274 611</b>   | <b>8 800</b> | <b>340 383</b>   |
|                | <b>USA</b>    | <b>CHRYSLER</b> | <b>250 417</b> | <b>912 136</b>   |              | <b>1 162 553</b> |
|                | <b>Total</b>  |                 | <b>502 020</b> | <b>1 488 197</b> | <b>8 800</b> | <b>1 999 017</b> |

**WORLD MOTOR VEHICLE PRODUCTION**  
**OICA correspondents survey**

**GROUP : DAIMLER AG**

| CONTINENT      | COUNTRY             | MAKE             | Year 2011        |                |                |                  | Total            |
|----------------|---------------------|------------------|------------------|----------------|----------------|------------------|------------------|
|                |                     |                  | CARS             | LCV            | HCV            | HEAVY BUS        |                  |
| <b>AFRICA</b>  | <b>South Africa</b> | <b>MERCEDES</b>  | <b>54 312</b>    | <b>649</b>     |                |                  | <b>54 961</b>    |
| <b>AMERICA</b> | <b>Argentina</b>    | <b>MERCEDES</b>  | <b>4 446</b>     | <b>11 933</b>  |                |                  | <b>16 379</b>    |
|                | <b>Brazil</b>       | <b>MERCEDES</b>  |                  |                | <b>49 543</b>  | <b>27 789</b>    | <b>77 332</b>    |
|                | <b>Mexico</b>       | <b>MERCEDES</b>  |                  |                |                | <b>3 231</b>     | <b>3 231</b>     |
|                | USA                 | FREIGHTLINER     |                  |                | 102 727        | 6 255            | 108 982          |
|                |                     | MERCEDES         | 148 253          |                |                |                  | 148 253          |
|                |                     | ORION            |                  |                |                | 466              | 466              |
|                |                     | TBB              |                  |                |                | 3 624            | 3 624            |
|                |                     | WESTERN STAR     |                  |                | 5 798          |                  | 5 798            |
|                | <b>Total</b>        |                  | <b>148 253</b>   |                | <b>108 525</b> | <b>10 345</b>    | <b>267 123</b>   |
| <b>Total</b>   |                     | <b>152 699</b>   | <b>11 933</b>    | <b>158 068</b> | <b>41 365</b>  | <b>364 065</b>   |                  |
| <b>ASIA</b>    | <b>China</b>        | <b>MERCEDES</b>  | <b>85 270</b>    | <b>2 487</b>   |                |                  | <b>87 757</b>    |
|                | <b>Japan</b>        | <b>FUSO</b>      |                  | <b>34 300</b>  | <b>101 900</b> | <b>9 922</b>     | <b>146 122</b>   |
|                | <b>Total</b>        |                  | <b>85 270</b>    | <b>36 787</b>  | <b>101 900</b> | <b>9 922</b>     | <b>233 879</b>   |
| <b>EU</b>      | <b>Austria</b>      | <b>MERCEDES</b>  | <b>7 123</b>     |                |                |                  | <b>7 123</b>     |
|                | France              | EVOBUS           |                  |                |                | 552              | 552              |
|                |                     | MERCEDES         | 103 635          |                |                |                  | 103 635          |
|                |                     | <b>Total</b>     | <b>103 635</b>   |                |                | <b>552</b>       | <b>104 187</b>   |
|                | Germany             | EVOBUS           |                  |                |                | 4 528            | 4 528            |
|                |                     | MERCEDES         | 997 628          | 153 233        | 99 516         |                  | 1 250 377        |
|                |                     | <b>Total</b>     | <b>997 628</b>   | <b>153 233</b> | <b>99 516</b>  | <b>4 528</b>     | <b>1 254 905</b> |
|                | <b>Hungary</b>      | <b>MERCEDES</b>  | <b>127</b>       |                |                |                  | <b>127</b>       |
|                | Portugal            | EVOBUS           |                  |                |                | 64               | 64               |
|                |                     | FUSO             |                  | 1 667          |                |                  | 1 667            |
|                |                     | MERCEDES         |                  | 2 013          | 1 763          |                  | 3 776            |
|                |                     | <b>Total</b>     |                  | <b>3 680</b>   | <b>1 763</b>   | <b>64</b>        | <b>5 507</b>     |
|                | Spain               | EVOBUS           |                  |                |                | 743              | 743              |
|                |                     | MERCEDES         | 42 625           | 47 597         |                |                  | 90 222           |
|                |                     | <b>Total</b>     | <b>42 625</b>    | <b>47 597</b>  |                | <b>743</b>       | <b>90 965</b>    |
| <b>Total</b>   |                     | <b>1 151 138</b> | <b>204 510</b>   | <b>101 279</b> | <b>5 887</b>   | <b>1 462 814</b> |                  |
| <b>EUROPE</b>  | <b>Turkey</b>       | <b>MERCEDES</b>  |                  |                | <b>18 330</b>  | <b>3 018</b>     | <b>21 348</b>    |
| <b>Total</b>   |                     |                  | <b>1 443 419</b> | <b>253 879</b> | <b>379 577</b> | <b>60 192</b>    | <b>2 137 067</b> |



**WORLD MOTOR VEHICLE PRODUCTION**  
**OICA correspondents survey**

**GROUP : DONGFENG MOTOR**

| CONTINENT COUNTRY |       | MAKE   | Year 2011 |                |                |                | Total         |
|-------------------|-------|--|-----------|----------------|----------------|----------------|---------------|
|                   |       |  | CARS      | LCV            | HCV            | HEAVY BUS      |               |
| ASIA              | China | Dongfeng automobile co., ltd                         | 27 742    | 128 355        | 114 167        | 6 775          | 277 039       |
|                   |       | Dongfeng bus Co., LTD                                |           | 5 418          |                | 8 631          | 14 049        |
|                   |       | Dongfeng ceccerciel vehicle                          |           |                | 172 407        |                | 172 407       |
|                   |       | Dongfeng chongqing Ann vehicle Co., LTD              | 245 600   | 88 600         |                |                | 334 200       |
|                   |       | Dongfeng industrial co.,LTD.                         |           | 1 742          | 8 910          |                | 10 652        |
|                   |       | Dongfeng liuzhou motorco.,LTD.                       | 101 998   |                | 37 272         |                | 139 270       |
|                   |       | Dongfeng Nanchong Automobile Ltd.                    |           | 1 159          | 5 453          | 191            | 6 803         |
|                   |       | Dongfeng Passenger Vehicle Company                   | 28 207    |                |                |                | 28 207        |
|                   |       | Dongfeng Shenyu Vehicle Co., Ltd                     |           |                | 10 885         |                | 10 885        |
|                   |       | Dongfeng special automobile chassis (hubei) co., LTD |           |                | 8 787          |                | 8 787         |
|                   |       | Dongfeng sport utility vehicle Co., LTD              |           |                | 1 791          |                | 1 791         |
|                   |       | Dongfeng Xinjiang Automobile Co., Ltd.               |           |                | 1 148          |                | 1 148         |
|                   |       | Dongfeng yulon motor Co., LTD                        | 7 079     |                |                |                | 7 079         |
|                   |       | Dongfeng Yunnan Automobile Co., Ltd.                 |           | 888            | 1 458          | 15             | 2 361         |
|                   |       | Dongfeng(shiyan) speclal commerclal vehicle co.,LTD  |           |                | 7 956          |                | 7 956         |
|                   |       | Dongfenghangzhou automobile Co., LTD,                |           |                | 3 276          | 258            | 3 534         |
|                   |       | Shandong Kaima Co., Ltd.                             |           | 28 662         | 53 600         |                | 82 262        |
|                   |       | Shenzhen Dongfeng Motor Company                      |           |                | 519            |                | 519           |
|                   |       | <b>Total</b>   |           | <b>410 626</b> | <b>254 824</b> | <b>427 629</b> | <b>15 870</b> |

**WORLD MOTOR VEHICLE PRODUCTION**  
**OICA correspondents survey**

**GROUP : FAW**

|           |         |  | Year 2011      |               |                |              |                |
|-----------|---------|--|----------------|---------------|----------------|--------------|----------------|
| CONTINENT | COUNTRY | MAKE                                   | CARS           | LCV           | HCV            | HEAVY BUS    | Total          |
| ASIA      | China   | China FAW                              | 103 212        | 49 445        | 211 067        | 3 916        | 367 640        |
|           |         | FAW CAR                                | 110 674        |               |                |              | 110 674        |
|           |         | FAW HAIMA AUTOMOBILE CO.,LTD.          | 152 018        |               |                |              | 152 018        |
|           |         | Tianjin FAW Xiali Automobile Co., Ltd. | 253 631        |               |                |              | 253 631        |
|           |         | <b>Total</b>                           | <b>619 535</b> | <b>49 445</b> | <b>211 067</b> | <b>3 916</b> | <b>883 963</b> |

**WORLD MOTOR VEHICLE PRODUCTION**  
**OICA correspondents survey**

**GROUP : FIAT**

|              |              |                | Year 2011        |                |               |                  |                  |
|--------------|--------------|----------------|------------------|----------------|---------------|------------------|------------------|
| CONTINENT    | COUNTRY      | MAKE           | CARS             | LCV            | HCV           | HEAVY BUS        | Total            |
| AMERICA      | Argentina    | FIAT           | 113 468          |                |               |                  | 113 468          |
|              |              | IVECO          |                  |                | 5 814         | 37               | 5 851            |
|              |              | <b>Total</b>   | <b>113 468</b>   |                | <b>5 814</b>  | <b>37</b>        | <b>119 319</b>   |
|              | Brazil       | FIAT           | 575 273          | 170 600        |               |                  | 745 873          |
|              |              | IVECO          |                  | 4 946          |               |                  | 4 946            |
|              |              | <b>Total</b>   | <b>575 273</b>   | <b>175 546</b> |               |                  | <b>750 819</b>   |
|              | <b>Total</b> |                | <b>688 741</b>   | <b>175 546</b> | <b>5 814</b>  | <b>37</b>        | <b>870 138</b>   |
| ASIA         | China        | IVECO          |                  | 75 739         | 27 004        | 38 649           | 141 392          |
|              | India        | FIAT           | 18 265           |                |               |                  | 18 265           |
|              | <b>Total</b> |                | <b>18 265</b>    | <b>75 739</b>  | <b>27 004</b> | <b>38 649</b>    | <b>159 657</b>   |
| EU           | France       | FIAT           |                  | 19 753         |               |                  | 19 753           |
|              |              | IVECO          |                  | 299            |               | 2 668            | 2 967            |
|              |              | <b>Total</b>   |                  | <b>20 052</b>  |               | <b>2 668</b>     | <b>22 720</b>    |
|              | Hungary      | FIAT           | 12 460           |                |               |                  | 12 460           |
|              | Italy        | FERRARI        | 7 314            |                |               |                  | 7 314            |
|              |              | FIAT           | 471 397          | 136 182        |               |                  | 607 579          |
|              |              | IVECO          |                  | 30 665         | 33 577        | 451              | 64 693           |
|              |              | MASERATI       | 6 163            |                |               |                  | 6 163            |
|              | <b>Total</b> | <b>484 874</b> | <b>166 847</b>   | <b>33 577</b>  | <b>451</b>    | <b>685 749</b>   |                  |
|              | Poland       | FIAT           | 400 560          |                |               |                  | 400 560          |
| <b>Total</b> |              | <b>897 894</b> | <b>186 899</b>   | <b>33 577</b>  | <b>3 119</b>  | <b>1 121 489</b> |                  |
| EUROPE       | Serbia       | FIAT           | 8 110            |                |               |                  | 8 110            |
|              | Turkey       | FIAT           | 128 642          | 48 084         |               |                  | 176 726          |
|              | <b>Total</b> |                | <b>136 752</b>   | <b>48 084</b>  |               |                  | <b>184 836</b>   |
| OCEANIA      | Australia    | IVECO          |                  |                | 775           | 59               | 834              |
| <b>Total</b> |              |                | <b>1 741 652</b> | <b>486 268</b> | <b>67 170</b> | <b>41 864</b>    | <b>2 336 954</b> |

**WORLD MOTOR VEHICLE PRODUCTION**  
**OICA correspondents survey**

**GROUP : FORD**

|                |              |               | Year 2011 |           |           |           |
|----------------|--------------|---------------|-----------|-----------|-----------|-----------|
| CONTINENT      | COUNTRY      | MAKE          | CARS      | LCV       | HCV       | Total     |
| <b>AMERICA</b> | Argentina    | Not specified | 57 934    | 45 949    |           | 103 883   |
|                | Brazil       | Not specified | 206 160   | 80 197    | 40 422    | 326 779   |
|                | Canada       | Not specified | 76 453    | 243 943   |           | 320 396   |
|                | Mexico       | Not specified | 455 480   |           |           | 455 480   |
|                | USA          | Not specified | 429 650   | 1 482 448 | 42 765    | 1 954 863 |
|                | Venezuela    | Not specified | 10 578    | 10 774    | 2 158     | 23 510    |
|                | <b>Total</b> |               |           | 1 236 255 | 1 863 311 | 85 345    |
| <b>ASIA</b>    | China        | FORD          | 375 854   |           |           | 375 854   |
|                | India        | Not specified | 116 261   | 2 913     |           | 119 174   |
|                | Taiwan       | Not specified | 27 529    | 9 938     |           | 37 467    |
|                | Thailand     | Not specified | 93 070    | 100 042   |           | 193 112   |
|                | <b>Total</b> |               |           | 612 714   | 112 893   |           |
| <b>EU</b>      | Belgium      | Not specified | 178 380   |           |           | 178 380   |
|                | Germany      | Not specified | 720 411   | 9 535     |           | 729 946   |
|                | Romania      | Not specified |           | 7 547     |           | 7 547     |
|                | Spain        | Not specified | 229 919   |           |           | 229 919   |
|                | UK           | Not specified |           | 28 170    |           | 28 170    |
|                | <b>Total</b> |               |           | 1 128 710 | 45 252    |           |
| <b>EUROPE</b>  | Russia       | Not specified | 98 807    |           |           | 98 807    |
|                | Turkey       | Not specified |           | 286 611   | 9 239     | 295 850   |
|                | <b>Total</b> |               | 98 807    | 286 611   | 9 239     | 394 657   |
| <b>OCEANIA</b> | Australia    | Not specified | 17 407    | 20 387    |           | 37 794    |
| <b>Total</b>   |              |               | 3 093 893 | 2 328 454 | 94 584    | 5 516 931 |

**WORLD MOTOR VEHICLE PRODUCTION  
OICA correspondents survey**

**GROUP : FUJI**

|                |              |             | Year 2011      |               |                |
|----------------|--------------|-------------|----------------|---------------|----------------|
| CONTINENT      | COUNTRY      | MAKE        | CARS           | LCV           | Total          |
| <b>AMERICA</b> | <b>USA</b>   | <b>FUJI</b> | <b>161 716</b> |               | <b>161 716</b> |
| <b>ASIA</b>    | <b>Japan</b> | <b>FUJI</b> | <b>366 518</b> | <b>52 027</b> | <b>418 545</b> |
| <b>Total</b>   |              |             | <b>528 234</b> | <b>52 027</b> | <b>580 261</b> |

**WORLD MOTOR VEHICLE PRODUCTION**  
**OICA correspondents survey**

**GROUP : G.M.**

|                |                    |                      | Year 2011        |                  |              |                  |                  |
|----------------|--------------------|----------------------|------------------|------------------|--------------|------------------|------------------|
| CONTINENT      | COUNTRY            | MAKE                 | CARS             | LCV              | HCV          | HEAVY BUS        | Total            |
| <b>AMERICA</b> | <b>Argentina</b>   | <b>Not specified</b> | <b>135 678</b>   | <b>750</b>       |              |                  | <b>136 428</b>   |
|                | <b>Brazil</b>      | <b>Not specified</b> | <b>518 487</b>   | <b>134 167</b>   |              |                  | <b>652 654</b>   |
|                | <b>Canada</b>      | <b>Not specified</b> | <b>317 940</b>   | <b>343 944</b>   |              |                  | <b>661 884</b>   |
|                | <b>Mexico</b>      | <b>Not specified</b> | <b>105 611</b>   | <b>438 535</b>   |              |                  | <b>544 146</b>   |
|                | <b>USA</b>         | <b>Not specified</b> | <b>721 501</b>   | <b>1 161 353</b> |              |                  | <b>1 882 854</b> |
|                | <b>Venezuela</b>   | <b>Not specified</b> | <b>27 650</b>    | <b>7 290</b>     | <b>7 064</b> |                  | <b>42 004</b>    |
|                | <b>Total</b>       |                      | <b>1 826 867</b> | <b>2 086 039</b> | <b>7 064</b> |                  | <b>3 919 970</b> |
| <b>ASIA</b>    | <b>China</b>       | <b>CHEVROLET</b>     | <b>66 739</b>    |                  |              |                  | <b>66 739</b>    |
|                |                    | <b>Not specified</b> | <b>1 207 445</b> |                  |              |                  | <b>1 207 445</b> |
|                |                    | <b>Total</b>         | <b>1 274 184</b> |                  |              |                  | <b>1 274 184</b> |
|                | <b>China-G.M.</b>  | <b>G.M.</b>          | <b>1 135 090</b> | <b>79 289</b>    |              |                  | <b>1 214 379</b> |
|                | <b>India</b>       | <b>Not specified</b> | <b>91 139</b>    | <b>20 974</b>    |              |                  | <b>112 113</b>   |
|                | <b>South Korea</b> | <b>Not specified</b> | <b>633 562</b>   | <b>167 630</b>   |              | <b>9 662</b>     | <b>810 854</b>   |
|                | <b>Thailand</b>    | <b>Not specified</b> | <b>29 254</b>    | <b>36 447</b>    |              |                  | <b>65 701</b>    |
|                | <b>Uzbekistan</b>  | <b>Not specified</b> | <b>201 251</b>   | <b>20 771</b>    |              |                  | <b>222 022</b>   |
| <b>Total</b>   |                    | <b>3 364 480</b>     | <b>325 111</b>   |                  | <b>9 662</b> | <b>3 699 253</b> |                  |
| <b>EU</b>      | <b>Germany</b>     | <b>Not specified</b> | <b>442 040</b>   |                  |              |                  | <b>442 040</b>   |
|                | <b>Poland</b>      | <b>Not specified</b> | <b>180 723</b>   |                  |              |                  | <b>180 723</b>   |
|                | <b>Spain</b>       | <b>Not specified</b> | <b>337 478</b>   | <b>27 941</b>    |              |                  | <b>365 419</b>   |
|                | <b>UK</b>          | <b>Not specified</b> | <b>137 971</b>   | <b>71 982</b>    |              |                  | <b>209 953</b>   |
|                | <b>Total</b>       |                      | <b>1 098 212</b> | <b>99 923</b>    |              |                  | <b>1 198 135</b> |
| <b>EUROPE</b>  | <b>Russia</b>      | <b>Not specified</b> | <b>126 345</b>   |                  |              |                  | <b>126 345</b>   |
| <b>OCEANIA</b> | <b>Australia</b>   | <b>Not specified</b> | <b>78 481</b>    | <b>9 486</b>     |              |                  | <b>87 967</b>    |
| <b>Total</b>   |                    |                      | <b>6 494 385</b> | <b>2 520 559</b> | <b>7 064</b> | <b>9 662</b>     | <b>9 031 670</b> |

**WORLD MOTOR VEHICLE PRODUCTION**  
**OICA correspondents survey**

**GROUP : GAZ**

|           |         |                  | Year 2011 |          |               |               |               |                |
|-----------|---------|------------------|-----------|----------|---------------|---------------|---------------|----------------|
| CONTINENT | COUNTRY | MAKE             | CARS      | LCV      | HCV           | HEAVY BUS     | Total         |                |
| EUROPE    | Russia  | AZ URAL          |           |          | 10 752        | 883           | 11 635        |                |
|           |         | GAZ              |           | 84 181   | 15 213        |               | 99 394        |                |
|           |         | GOLAZ            |           |          |               | 24            | 24            |                |
|           |         | KAVZ             |           |          |               | 901           | 901           |                |
|           |         | LIAZ             |           |          |               | 206           | 206           |                |
|           |         | LIKINO BUS PLANT |           |          |               | 2 269         | 2 269         |                |
|           |         | PAZ              |           |          |               | 10 026        | 10 026        |                |
|           |         | VOLGA            |           | 1        |               |               |               | 1              |
|           |         | <b>Total</b>     |           | <b>1</b> | <b>84 181</b> | <b>25 965</b> | <b>14 309</b> | <b>124 456</b> |

**WORLD MOTOR VEHICLE PRODUCTION**  
**OICA correspondents survey**

**GROUP : GEELY**

|              |              |  | Year 2011      |                |
|--------------|--------------|--|----------------|----------------|
| CONTINENT    | COUNTRY      | MAKE                                   | CARS           | Total          |
| ASIA         | China        | VOLVO                                  | 16 899         | 16 899         |
|              |              | Zhejiang Geely Holding Group Co., Ltd. | 435 476        | 435 476        |
|              |              | <b>Total</b>                           | <b>452 375</b> | <b>452 375</b> |
|              | Malaysia     | VOLVO                                  | 1 678          | 1 678          |
|              | <b>Total</b> |  | <b>454 053</b> | <b>454 053</b> |
| EU           | Belgium      | VOLVO                                  | 266 245        | 266 245        |
|              | Sweden       | VOLVO                                  | 176 809        | 176 809        |
|              | <b>Total</b> |  | <b>443 054</b> | <b>443 054</b> |
| <b>Total</b> |              |  | <b>897 107</b> | <b>897 107</b> |



**WORLD MOTOR VEHICLE PRODUCTION  
OICA correspondents survey**

**GROUP : GREAT WALL**

|             |              |                                   | Year 2011      |                |                |
|-------------|--------------|-----------------------------------|----------------|----------------|----------------|
| CONTINENT   | COUNTRY      | MAKE                              | CARS           | LCV            | Total          |
| <b>ASIA</b> | <b>China</b> | <b>Great Wall Motor Co., Ltd.</b> | <b>366 452</b> | <b>120 110</b> | <b>486 562</b> |

**WORLD MOTOR VEHICLE PRODUCTION**  
**OICA correspondents survey**

**GROUP : GUANGZHOU AUTO INDUSTRY**

| CONTINENT COUNTRY |       | MAKE                            | Year 2011     |               |            |               |
|-------------------|-------|---------------------------------|---------------|---------------|------------|---------------|
|                   |       |                                 | CARS          | LCV           | HEAVY BUS  | Total         |
| ASIA              | China | GAC bus                         |               | 773           | 725        | 1 498         |
|                   |       | Gac Changfeng                   | 24 451        |               |            | 24 451        |
|                   |       | GAC Gonow Motor Vehicle Co.,Ltd | 11 380        | 12 222        |            | 23 602        |
|                   |       | GAC Honda-EVERUS S1             | 25 570        |               |            | 25 570        |
|                   |       | GAC motor                       | 16 723        |               |            | 16 723        |
|                   |       | <b>Total</b>                    | <b>78 124</b> | <b>12 995</b> | <b>725</b> | <b>91 844</b> |

**WORLD MOTOR VEHICLE PRODUCTION**  
**OICA correspondents survey**

**GROUP : HONDA**

|                |                    |              | Year 2011        |               |                  |
|----------------|--------------------|--------------|------------------|---------------|------------------|
| CONTINENT      | COUNTRY            | MAKE         | CARS             | LCV           | Total            |
| <b>AMERICA</b> | <b>Argentina</b>   | <b>HONDA</b> | <b>895</b>       |               | <b>895</b>       |
|                | <b>Brazil</b>      | <b>HONDA</b> | <b>82 458</b>    |               | <b>82 458</b>    |
|                | <b>Canada</b>      | <b>HONDA</b> | <b>234 051</b>   |               | <b>234 051</b>   |
|                | <b>Mexico</b>      | <b>HONDA</b> | <b>45 426</b>    |               | <b>45 426</b>    |
|                | <b>USA</b>         | <b>HONDA</b> | <b>823 650</b>   |               | <b>823 650</b>   |
|                | <b>Total</b>       |              | <b>1 186 480</b> |               | <b>1 186 480</b> |
| <b>ASIA</b>    | <b>China</b>       | <b>HONDA</b> | <b>646 208</b>   |               | <b>646 208</b>   |
|                | <b>India</b>       | <b>HONDA</b> | <b>44 767</b>    |               | <b>44 767</b>    |
|                | <b>Indonesia</b>   | <b>HONDA</b> | <b>41 694</b>    |               | <b>41 694</b>    |
|                | <b>Japan</b>       | <b>HONDA</b> | <b>687 948</b>   | <b>22 673</b> | <b>710 621</b>   |
|                | <b>Malaysia</b>    | <b>HONDA</b> | <b>23 540</b>    |               | <b>23 540</b>    |
|                | <b>Pakistan</b>    | <b>HONDA</b> | <b>14 620</b>    |               | <b>14 620</b>    |
|                | <b>Philippines</b> | <b>HONDA</b> | <b>6 379</b>     |               | <b>6 379</b>     |
|                | <b>Taiwan</b>      | <b>HONDA</b> | <b>19 495</b>    |               | <b>19 495</b>    |
|                | <b>Thailand</b>    | <b>HONDA</b> | <b>103 427</b>   |               | <b>103 427</b>   |
|                | <b>Vietnam</b>     | <b>HONDA</b> | <b>1 985</b>     |               | <b>1 985</b>     |
|                | <b>Total</b>       |              | <b>1 590 063</b> | <b>22 673</b> | <b>1 612 736</b> |
| <b>EU</b>      | <b>UK</b>          | <b>HONDA</b> | <b>97 459</b>    |               | <b>97 459</b>    |
| <b>EUROPE</b>  | <b>Turkey</b>      | <b>HONDA</b> | <b>12 341</b>    |               | <b>12 341</b>    |
| <b>Total</b>   |                    |              | <b>2 886 343</b> | <b>22 673</b> | <b>2 909 016</b> |

**WORLD MOTOR VEHICLE PRODUCTION**  
**OICA correspondents survey**

**GROUP : HUNAN JIANGNAN AUTOMOBILE MANUFACTURING CO.**

|             |              |                       | Year 2011      |                |
|-------------|--------------|-----------------------|----------------|----------------|
| CONTINENT   | COUNTRY      | MAKE                  | CARS           | Total          |
| <b>ASIA</b> | <b>China</b> | <b>HUNAN JIANGNAN</b> | <b>137 937</b> | <b>137 937</b> |

**WORLD MOTOR VEHICLE PRODUCTION**  
**OICA correspondents survey**

**GROUP : HYUNDAI**

| CONTINENT    | COUNTRY        | MAKE             | Year 2011        |                |               |                  | Total            |
|--------------|----------------|------------------|------------------|----------------|---------------|------------------|------------------|
|              |                |                  | CARS             | LCV            | HCV           | HEAVY BUS        |                  |
| AMERICA      | USA            | HYUNDAI          | 246 972          | 91 155         |               |                  | 338 127          |
|              |                | KIA              | 273 751          |                |               |                  | 273 751          |
|              |                | <b>Total</b>     | <b>520 723</b>   | <b>91 155</b>  |               |                  | <b>611 878</b>   |
| ASIA         | China          | HYUNDAI          | 743 888          |                |               |                  | 743 888          |
|              |                | KIA              | 432 516          |                |               |                  | 432 516          |
|              |                | <b>Total</b>     | <b>1 176 404</b> |                |               |                  | <b>1 176 404</b> |
|              | India          | HYUNDAI          | 619 785          |                |               |                  | 619 785          |
|              | South Korea    | HYUNDAI          | 1 589 942        | 239 718        | 47 922        | 14 672           | 1 892 254        |
|              |                | KIA              | 1 478 751        | 78 482         | 25 071        | 1 617            | 1 583 921        |
|              |                | <b>Total</b>     | <b>3 068 693</b> | <b>318 200</b> | <b>72 993</b> | <b>16 289</b>    | <b>3 476 175</b> |
| <b>Total</b> |                | <b>4 864 882</b> | <b>318 200</b>   | <b>72 993</b>  | <b>16 289</b> | <b>5 272 364</b> |                  |
| EU           | Czech Republic | HYUNDAI          | 251 146          |                |               |                  | 251 146          |
|              | Slovakia       | KIA              | 252 252          |                |               |                  | 252 252          |
|              | <b>Total</b>   |                  | <b>503 398</b>   |                |               |                  | <b>503 398</b>   |
| EUROPE       | Russia         | HYUNDAI          | 138 987          |                |               |                  | 138 987          |
|              | Turkey         | HYUNDAI          | 90 231           |                |               |                  | 90 231           |
|              | <b>Total</b>   |                  | <b>229 218</b>   |                |               |                  | <b>229 218</b>   |
| <b>Total</b> |                |                  | <b>6 118 221</b> | <b>409 355</b> | <b>72 993</b> | <b>16 289</b>    | <b>6 616 858</b> |

**WORLD MOTOR VEHICLE PRODUCTION**  
**OICA correspondents survey**

**GROUP : IRAN KHODRO**

|           |         |                    | Year 2011      |                |              |                |
|-----------|---------|--------------------|----------------|----------------|--------------|----------------|
| CONTINENT | COUNTRY | MAKE               | CARS           | LCV            | HCV          | Total          |
| ASIA      | Iran    | IRAN KHODRO        | 124 815        | 112 758        |              | 237 573        |
|           |         | IRAN KHODRO DIESEL |                | 249            | 1 302        | 1 551          |
|           |         | <b>Total</b>       | <b>124 815</b> | <b>113 007</b> | <b>1 302</b> | <b>239 124</b> |

**WORLD MOTOR VEHICLE PRODUCTION**  
**OICA correspondents survey**

**GROUP : ISUZU**

|                |                     |              | Year 2011     |                |              |                |
|----------------|---------------------|--------------|---------------|----------------|--------------|----------------|
| CONTINENT      | COUNTRY             | MAKE         | LCV           | HCV            | HEAVY BUS    | Total          |
| <b>AFRICA</b>  | <b>Egypt</b>        | <b>ISUZU</b> |               | <b>12 269</b>  |              | <b>12 269</b>  |
|                | <b>Kenya</b>        | <b>ISUZU</b> |               | <b>2 945</b>   |              | <b>2 945</b>   |
|                | <b>South Africa</b> | <b>ISUZU</b> |               | <b>14 132</b>  |              | <b>14 132</b>  |
|                | <b>Total</b>        |              |               | <b>29 346</b>  |              | <b>29 346</b>  |
| <b>AMERICA</b> | <b>Ecuador</b>      | <b>ISUZU</b> |               | <b>15 374</b>  |              | <b>15 374</b>  |
|                | <b>USA</b>          | <b>ISUZU</b> |               | <b>12 857</b>  |              | <b>12 857</b>  |
|                | <b>Total</b>        |              |               | <b>28 231</b>  |              | <b>28 231</b>  |
| <b>ASIA</b>    | <b>China</b>        | <b>ISUZU</b> |               | <b>44 208</b>  |              | <b>44 208</b>  |
|                | <b>India</b>        | <b>ISUZU</b> |               | <b>20 974</b>  |              | <b>20 974</b>  |
|                | <b>Indonesia</b>    | <b>ISUZU</b> |               | <b>26 708</b>  |              | <b>26 708</b>  |
|                | <b>Japan</b>        | <b>ISUZU</b> | <b>31 191</b> | <b>168 171</b> | <b>2 339</b> | <b>201 701</b> |
|                | <b>Malaysia</b>     | <b>ISUZU</b> |               | <b>4 953</b>   |              | <b>4 953</b>   |
|                | <b>Philippines</b>  | <b>ISUZU</b> |               | <b>8 112</b>   |              | <b>8 112</b>   |
|                | <b>Thailand</b>     | <b>ISUZU</b> |               | <b>111 033</b> |              | <b>111 033</b> |
|                | <b>Turkey</b>       | <b>ISUZU</b> |               | <b>4 346</b>   |              | <b>4 346</b>   |
|                | <b>Vietnam</b>      | <b>ISUZU</b> |               | <b>1 277</b>   |              | <b>1 277</b>   |
|                | <b>Total</b>        |              | <b>31 191</b> | <b>389 782</b> | <b>2 339</b> | <b>423 312</b> |
| <b>Total</b>   |                     |              | <b>31 191</b> | <b>447 359</b> | <b>2 339</b> | <b>480 889</b> |

**WORLD MOTOR VEHICLE PRODUCTION  
OICA correspondents survey**

**GROUP : JAC**

| CONTINENT COUNTRY MAKE |              |                                       | Year 2011      |                |                |               |                |
|------------------------|--------------|---------------------------------------|----------------|----------------|----------------|---------------|----------------|
|                        |              |                                       | CARS           | LCV            | HCV            | HEAVY BUS     | Total          |
| <b>ASIA</b>            | <b>China</b> | <b>Anhui Jianghuai Auto Co., Ltd.</b> | <b>218 352</b> | <b>100 409</b> | <b>154 921</b> | <b>12 174</b> | <b>485 856</b> |



**WORLD MOTOR VEHICLE PRODUCTION**  
**OICA correspondents survey**

**GROUP : M.A.N.**

|              |                |               | Year 2011     |               |               |
|--------------|----------------|---------------|---------------|---------------|---------------|
| CONTINENT    | COUNTRY        | MAKE          | HCV           | HEAVY BUS     | Total         |
| <b>EU</b>    | <b>Austria</b> | <b>M.A.N.</b> | <b>22 173</b> | <b>48</b>     | <b>22 221</b> |
|              | Germany        | M.A.N.        | 48 275        | 1 821         | 50 096        |
|              |                | NEOPLAN       |               | 491           | 491           |
|              |                | <b>Total</b>  |               | <b>48 275</b> | <b>2 312</b>  |
|              | <b>Poland</b>  | <b>M.A.N.</b> | <b>8 304</b>  | <b>2 081</b>  | <b>10 385</b> |
| <b>Total</b> |                | <b>78 752</b> | <b>4 441</b>  | <b>83 193</b> |               |
| EUROPE       | Turkey         | M.A.N.        |               | 1 193         | 1 193         |
|              |                | NEOPLAN       |               | 417           | 417           |
|              |                | <b>Total</b>  |               | <b>1 610</b>  | <b>1 610</b>  |
| <b>Total</b> |                | <b>78 752</b> | <b>6 051</b>  | <b>84 803</b> |               |

**WORLD MOTOR VEHICLE PRODUCTION  
OICA correspondents survey**

**GROUP : MAHINDRA**

|             |                    |                  | Year 2011      |                |              |            |                |
|-------------|--------------------|------------------|----------------|----------------|--------------|------------|----------------|
| CONTINENT   | COUNTRY            | MAKE             | CARS           | LCV            | HCV          | HEAVY BUS  | Total          |
| <b>ASIA</b> | <b>India</b>       | <b>MAHINDRA</b>  | <b>231 813</b> | <b>152 602</b> | <b>2 020</b> | <b>124</b> | <b>386 559</b> |
|             | <b>South Korea</b> | <b>SSANGYONG</b> | <b>113 249</b> |                |              |            | <b>113 249</b> |
|             | <b>Total</b>       |                  | <b>345 062</b> | <b>152 602</b> | <b>2 020</b> | <b>124</b> | <b>499 808</b> |

**WORLD MOTOR VEHICLE PRODUCTION**  
**OICA correspondents survey**

**GROUP : MAZDA**

|                |                     |              | Year 2011        |               |                  |
|----------------|---------------------|--------------|------------------|---------------|------------------|
| CONTINENT      | COUNTRY             | MAKE         | CARS             | LCV           | Total            |
| <b>AFRICA</b>  | <b>South Africa</b> | <b>MAZDA</b> |                  | <b>3 875</b>  | <b>3 875</b>     |
|                | <b>Zimbabwe</b>     | <b>MAZDA</b> |                  | <b>829</b>    | <b>829</b>       |
|                | <b>Total</b>        |              |                  | <b>4 704</b>  | <b>4 704</b>     |
| <b>AMERICA</b> | <b>Colombia</b>     | <b>MAZDA</b> |                  | <b>4 346</b>  | <b>4 346</b>     |
|                | <b>Ecuador</b>      | <b>MAZDA</b> |                  | <b>8 148</b>  | <b>8 148</b>     |
|                | <b>USA</b>          | <b>MAZDA</b> | <b>43 523</b>    |               | <b>43 523</b>    |
|                | <b>Total</b>        |              | <b>43 523</b>    | <b>12 494</b> | <b>56 017</b>    |
| <b>ASIA</b>    | <b>China</b>        | <b>MAZDA</b> | <b>212 467</b>   |               | <b>212 467</b>   |
|                | <b>Japan</b>        | <b>MAZDA</b> | <b>798 060</b>   | <b>15 242</b> | <b>813 302</b>   |
|                | <b>Taiwan</b>       | <b>MAZDA</b> | <b>3 471</b>     |               | <b>3 471</b>     |
|                | <b>Thailand</b>     | <b>MAZDA</b> | <b>46 111</b>    | <b>29 519</b> | <b>75 630</b>    |
|                | <b>Total</b>        |              | <b>1 060 109</b> | <b>44 761</b> | <b>1 104 870</b> |
| <b>Total</b>   |                     |              | <b>1 103 632</b> | <b>61 959</b> | <b>1 165 591</b> |

**WORLD MOTOR VEHICLE PRODUCTION**  
**OICA correspondents survey**

**GROUP : MITSUBISHI**

| CONTINENT | COUNTRY      | MAKE       | Year 2011 |         |       |           |
|-----------|--------------|------------|-----------|---------|-------|-----------|
|           |              |            | CARS      | LCV     | HCV   | Total     |
| AFRICA    | South Africa | MITSUBISHI |           | 778     |       | 778       |
|           | Tunisia      | MITSUBISHI |           | 1 860   |       | 1 860     |
|           | Total        |            |           | 2 638   |       | 2 638     |
| AMERICA   | Brazil       | MITSUBISHI | 37 350    |         |       | 37 350    |
|           | USA          | MITSUBISHI | 37 145    |         |       | 37 145    |
|           | Total        |            | 74 495    |         |       | 74 495    |
| ASIA      | China        | MITSUBISHI | 109 463   |         |       | 109 463   |
|           | India        | MITSUBISHI | 497       |         |       | 497       |
|           | Indonesia    | MITSUBISHI |           | 53 316  |       | 53 316    |
|           | Japan        | MITSUBISHI | 536 142   | 64 022  | 3 430 | 603 594   |
|           | Philippines  | MITSUBISHI | 12 778    |         |       | 12 778    |
|           | Taiwan       | MITSUBISHI | 50 088    |         |       | 50 088    |
|           | Thailand     | MITSUBISHI | 209 003   |         |       | 209 003   |
|           | Vietnam      | MITSUBISHI | 602       |         |       | 602       |
|           | Total        |            | 918 573   | 117 338 | 3 430 | 1 039 341 |
| EU        | Netherlands  | MITSUBISHI | 23 808    |         |       | 23 808    |
| Total     |              |            | 1 016 876 | 119 976 | 3 430 | 1 140 282 |

**WORLD MOTOR VEHICLE PRODUCTION  
OICA correspondents survey**

**GROUP : NAVISTAR**

|                |               |                      | Year 2011     |              |               |
|----------------|---------------|----------------------|---------------|--------------|---------------|
| CONTINENT      | COUNTRY       | MAKE                 | HCV           | HEAVY BUS    | Total         |
| <b>AMERICA</b> | <b>Canada</b> | <b>INTERNATIONAL</b> | <b>1</b>      |              | <b>1</b>      |
|                | <b>Mexico</b> | <b>INTERNATIONAL</b> | <b>36 363</b> |              | <b>36 363</b> |
|                | <b>USA</b>    | <b>INTERNATIONAL</b> | <b>42 998</b> | <b>9 487</b> | <b>52 485</b> |
|                | <b>Total</b>  |                      | <b>79 362</b> | <b>9 487</b> | <b>88 849</b> |

**WORLD MOTOR VEHICLE PRODUCTION**  
**OICA correspondents survey**

**GROUP : NISSAN**

|                |                     |               | Year 2011        |                |               |                  |
|----------------|---------------------|---------------|------------------|----------------|---------------|------------------|
| CONTINENT      | COUNTRY             | MAKE          | CARS             | LCV            | HCV           | Total            |
| <b>AFRICA</b>  | <b>South Africa</b> | <b>NISSAN</b> | <b>13 882</b>    | <b>32 299</b>  |               | <b>46 181</b>    |
| <b>AMERICA</b> | <b>Brazil</b>       | <b>NISSAN</b> | <b>17 645</b>    | <b>14 722</b>  |               | <b>32 367</b>    |
|                | <b>USA</b>          | <b>NISSAN</b> | <b>385 211</b>   | <b>177 543</b> |               | <b>562 754</b>   |
|                | <b>Total</b>        |               | <b>402 856</b>   | <b>192 265</b> |               | <b>595 121</b>   |
| <b>ASIA</b>    | <b>China</b>        | <b>NISSAN</b> | <b>814 280</b>   | <b>423 188</b> |               | <b>1 237 468</b> |
|                | <b>India</b>        | <b>NISSAN</b> | <b>126 759</b>   |                |               | <b>126 759</b>   |
|                | <b>Indonesia</b>    | <b>NISSAN</b> | <b>42 462</b>    |                |               | <b>42 462</b>    |
|                | <b>Japan</b>        | <b>NISSAN</b> | <b>1 004 666</b> | <b>56 518</b>  | <b>51 811</b> | <b>1 112 995</b> |
|                | <b>Mexico</b>       | <b>NISSAN</b> | <b>528 976</b>   | <b>78 111</b>  |               | <b>607 087</b>   |
|                | <b>Philippines</b>  | <b>NISSAN</b> | <b>466</b>       | <b>58</b>      |               | <b>524</b>       |
|                | <b>Taiwan</b>       | <b>NISSAN</b> | <b>43 304</b>    |                |               | <b>43 304</b>    |
|                | <b>Thailand</b>     | <b>NISSAN</b> | <b>107 491</b>   | <b>77 012</b>  |               | <b>184 503</b>   |
|                | <b>Total</b>        |               | <b>2 668 404</b> | <b>634 887</b> | <b>51 811</b> | <b>3 355 102</b> |
| <b>EU</b>      | <b>Spain</b>        | <b>NISSAN</b> | <b>15 786</b>    | <b>138 966</b> |               | <b>154 752</b>   |
|                | <b>UK</b>           | <b>NISSAN</b> | <b>480 517</b>   |                |               | <b>480 517</b>   |
|                | <b>Total</b>        |               | <b>496 303</b>   | <b>138 966</b> |               | <b>635 269</b>   |
| <b>Total</b>   |                     |               | <b>3 581 445</b> | <b>998 417</b> | <b>51 811</b> | <b>4 631 673</b> |

**WORLD MOTOR VEHICLE PRODUCTION  
OICA correspondents survey**

**GROUP : PACCAR**

|              |               |                 | Year 2011      |               |
|--------------|---------------|-----------------|----------------|---------------|
| CONTINENT    | COUNTRY       | MAKE            | HCV            | Total         |
| AMERICA      | Canada        | KENWORTH        | 5 543          | 5 543         |
|              |               | PETERBILT       | 4 337          | 4 337         |
|              |               | <b>Total</b>    | <b>9 880</b>   | <b>9 880</b>  |
|              | <b>Mexico</b> | <b>KENWORTH</b> | <b>15 870</b>  | <b>15 870</b> |
|              | USA           | KENWORTH        | 30 625         | 30 625        |
|              |               | PETERBILT       | 28 124         | 28 124        |
|              |               | <b>Total</b>    | <b>58 749</b>  | <b>58 749</b> |
|              | <b>Total</b>  |                 | <b>84 499</b>  | <b>84 499</b> |
| EU           | Netherlands   | DAF             | 22 168         | 22 168        |
|              | UK            | LEYLAND         | 14 568         | 14 568        |
|              | <b>Total</b>  |                 | <b>36 736</b>  | <b>36 736</b> |
| <b>Total</b> |               | <b>121 235</b>  | <b>121 235</b> |               |

**WORLD MOTOR VEHICLE PRODUCTION**  
**OICA correspondents survey**

**GROUP : PORSCHE**

|           |                |                | Year 2011      |                |
|-----------|----------------|----------------|----------------|----------------|
| CONTINENT | COUNTRY        | MAKE           | CARS           | Total          |
| <b>EU</b> | <b>Finland</b> | <b>PORSCHE</b> | <b>2 015</b>   | <b>2 015</b>   |
|           | <b>Germany</b> | <b>PORSCHE</b> | <b>125 005</b> | <b>125 005</b> |
|           | <b>Total</b>   |                | <b>127 020</b> | <b>127 020</b> |



**WORLD MOTOR VEHICLE PRODUCTION  
OICA correspondents survey**

**GROUP : PROTON**

|              |                 |               | Year 2011      |               |                |
|--------------|-----------------|---------------|----------------|---------------|----------------|
| CONTINENT    | COUNTRY         | MAKE          | CARS           | LCV           | Total          |
| <b>ASIA</b>  | <b>Malaysia</b> | <b>PROTON</b> | <b>141 594</b> | <b>29 104</b> | <b>170 698</b> |
| <b>EU</b>    | <b>UK</b>       | <b>LOTUS</b>  | <b>1 458</b>   |               | <b>1 458</b>   |
| <b>Total</b> |                 |               | <b>143 052</b> | <b>29 104</b> | <b>172 156</b> |

**WORLD MOTOR VEHICLE PRODUCTION**  
**OICA correspondents survey**

**GROUP : PSA**

| CONTINENT    | COUNTRY        | MAKE             | Year 2011      |                  |                |         |
|--------------|----------------|------------------|----------------|------------------|----------------|---------|
|              |                |                  | CARS           | LCV              | Total          |         |
| AMERICA      | Argentina      | CITROEN          | 29 670         | 4 560            | 34 230         |         |
|              |                | PEUGEOT          | 98 627         | 9 938            | 108 565        |         |
|              |                | <b>Total</b>     | <b>128 297</b> | <b>14 498</b>    | <b>142 795</b> |         |
|              | Brazil         | CITROEN          | 86 252         | 3 130            | 89 382         |         |
|              |                | PEUGEOT          | 46 993         | 9 387            | 56 380         |         |
|              |                | <b>Total</b>     | <b>133 245</b> | <b>12 517</b>    | <b>145 762</b> |         |
|              | <b>Total</b>   |                  | <b>261 542</b> | <b>27 015</b>    | <b>288 557</b> |         |
|              | ASIA           | China            | CITROEN        | 231 822          |                | 231 822 |
|              |                |                  | PEUGEOT        | 172 582          |                | 172 582 |
| <b>Total</b> |                |                  | <b>404 404</b> |                  | <b>404 404</b> |         |
| Iran         |                | PEUGEOT          | 478 719        |                  | 478 719        |         |
| Japan        |                | CITROEN          | 10 720         |                  | 10 720         |         |
|              |                | PEUGEOT          | 10 319         |                  | 10 319         |         |
|              |                | <b>Total</b>     | <b>21 039</b>  |                  | <b>21 039</b>  |         |
| Malaysia     |                | PEUGEOT          | 2 592          |                  | 2 592          |         |
| <b>Total</b> |                |                  | <b>906 754</b> |                  | <b>906 754</b> |         |
| EU           | Austria        | PEUGEOT          | 19 725         |                  | 19 725         |         |
|              | Czech Republic | CITROEN          | 88 575         | 94               | 88 669         |         |
|              |                | PEUGEOT          | 91 048         | 260              | 91 308         |         |
|              |                | <b>Total</b>     | <b>179 623</b> | <b>354</b>       | <b>179 977</b> |         |
|              | France         | CITROEN          | 1 233 591      | 90 655           | 1 324 246      |         |
|              | Italy          | CITROEN          |                | 44 108           | 44 108         |         |
|              |                | PEUGEOT          |                | 54 414           | 54 414         |         |
|              |                | <b>Total</b>     |                | <b>98 522</b>    | <b>98 522</b>  |         |
|              | Portugal       | CITROEN          | 3 679          | 22 003           | 25 682         |         |
|              |                | PEUGEOT          | 5 000          | 19 609           | 24 609         |         |
|              |                | <b>Total</b>     | <b>8 679</b>   | <b>41 612</b>    | <b>50 291</b>  |         |
|              | Slovakia       | CITROEN          | 68 378         |                  | 68 378         |         |
|              |                | PEUGEOT          | 99 266         | 10 145           | 109 411        |         |
|              |                | <b>Total</b>     | <b>167 644</b> | <b>10 145</b>    | <b>177 789</b> |         |
|              | Spain          | CITROEN          | 189 184        | 50 528           | 239 712        |         |
| PEUGEOT      |                | 152 848          | 59 046         | 211 894          |                |         |
| <b>Total</b> |                | <b>342 032</b>   | <b>109 574</b> | <b>451 606</b>   |                |         |
| <b>Total</b> |                | <b>1 951 294</b> | <b>350 862</b> | <b>2 302 156</b> |                |         |
| EUROPE       | Turkey         | CITROEN          | 18 777         | 20 261           | 39 038         |         |
|              |                | PEUGEOT          | 23 588         | 22 317           | 45 905         |         |
|              |                | <b>Total</b>     | <b>42 365</b>  | <b>42 578</b>    | <b>84 943</b>  |         |
| <b>Total</b> |                | <b>3 161 955</b> | <b>420 455</b> | <b>3 582 410</b> |                |         |

**WORLD MOTOR VEHICLE PRODUCTION**  
**OICA correspondents survey**

**GROUP : RENAULT**

| CONTINENT     | COUNTRY       | MAKE    | Year 2011 |         |           |
|---------------|---------------|---------|-----------|---------|-----------|
|               |               |         | CARS      | LCV     | Total     |
| AFRICA        | Morocco       | RENAULT | 54 638    | 2 339   | 56 977    |
|               | South Africa  | RENAULT | 7 877     |         | 7 877     |
|               | Total         |         | 62 515    | 2 339   | 64 854    |
| AMERICA       | Argentina     | RENAULT | 84 209    | 27 914  | 112 123   |
|               | Brazil        | RENAULT | 212 515   | 45 546  | 258 061   |
|               | Colombia      | RENAULT | 28 030    |         | 28 030    |
|               | Total         |         | 324 754   | 73 460  | 398 214   |
| ASIA          | India         | RENAULT | 12 171    | 113     | 12 284    |
|               | Iran          | RENAULT | 82 564    |         | 82 564    |
|               | South Korea   | RENAULT | 243 365   |         | 243 365   |
|               | Total         |         | 338 100   | 113     | 338 213   |
| EU            | France        | RENAULT | 444 862   | 201 448 | 646 310   |
|               | Slovenia      | RENAULT | 168 955   | 5 164   | 174 119   |
|               | Spain         | RENAULT | 353 370   | 53 508  | 406 878   |
|               | UK            | RENAULT | 3 759     | 11 193  | 14 952    |
|               | Total         |         | 970 946   | 271 313 | 1 242 259 |
| EU            | Romania       | RENAULT | 309 984   | 17 410  | 327 394   |
| EUROPE        | Russia        | RENAULT | 140 653   | 245     | 140 898   |
|               | Turkey        | RENAULT | 296 088   | 17 165  | 313 253   |
|               | Total         |         | 436 741   | 17 410  | 454 151   |
| NOT SPECIFIED | Not specified | RENAULT |           | 4       | 4         |
| Total         |               |         | 2 443 040 | 382 049 | 2 825 089 |

**WORLD MOTOR VEHICLE PRODUCTION**  
**OICA correspondents survey**

**GROUP : SAIC**

| CONTINENT COUNTRY |       |   | Year 2011        |                |               |              |                  |
|-------------------|-------|---|------------------|----------------|---------------|--------------|------------------|
|                   |       |   | MAKE             | CARS           | LCV           | HCV          | HEAVY BUS        |
| ASIA              | China | NANJING AUTOMOBILE                              | 63 009           | 43 718         | 29 509        | 2 729        | 138 965          |
|                   |       | SAIC Iveco Hongyan Commercial Vehicle Co., Ltd. |                  |                | 27 005        |              | 27 005           |
|                   |       | SAIC Motor                                      | 94 197           |                |               |              | 94 197           |
|                   |       | SGMW  | 1 135 090        | 79 289         |               |              | 1 214 379        |
|                   |       | Shanghai automotive commercial vehicle Co., LTD |                  | 3 956          |               |              | 3 956            |
|                   |       | <b>Total</b>                                    | <b>1 292 296</b> | <b>126 963</b> | <b>56 514</b> | <b>2 729</b> | <b>1 478 502</b> |

**WORLD MOTOR VEHICLE PRODUCTION**  
**OICA correspondents survey**

**GROUP : SAIPA**

|           |         |              | Year 2011      |               |            |                |
|-----------|---------|--------------|----------------|---------------|------------|----------------|
| CONTINENT | COUNTRY | MAKE         | CARS           | LCV           | HCV        | Total          |
| ASIA      | Iran    | PARS KHODRO  | 290 577        |               |            | 290 577        |
|           |         | SAIPA        | 387 575        |               |            | 387 575        |
|           |         | SAIPA DIESEL |                |               | 881        | 881            |
|           |         | ZAMYAD       |                | 59 970        |            | 59 970         |
|           |         | <b>Total</b> | <b>678 152</b> | <b>59 970</b> | <b>881</b> | <b>739 003</b> |

**WORLD MOTOR VEHICLE PRODUCTION  
OICA correspondents survey**

**GROUP : SHANNXI**

|             |              |                     | Year 2011    |          |               |              |                |
|-------------|--------------|---------------------|--------------|----------|---------------|--------------|----------------|
| CONTINENT   | COUNTRY      | MAKE                | CARS         | LCV      | HCV           | HEAVY BUS    | Total          |
| <b>ASIA</b> | <b>China</b> | <b>SHANNXI AUTO</b> | <b>9 524</b> | <b>3</b> | <b>96 686</b> | <b>1 026</b> | <b>107 239</b> |

**WORLD MOTOR VEHICLE PRODUCTION  
OICA correspondents survey**

**GROUP : SICHUAN NANJUN**

| CONTINENT COUNTRY |              |  | Year 2011     |               |              |               |
|-------------------|--------------|--|---------------|---------------|--------------|---------------|
|                   |              |  | LCV           | HCV           | HEAVY BUS    | Total         |
| <b>ASIA</b>       | <b>China</b> | <b>Sichuan Nanjun Motor Industrial Group Corp.</b> | <b>22 099</b> | <b>50 271</b> | <b>1 535</b> | <b>73 905</b> |

**WORLD MOTOR VEHICLE PRODUCTION  
OICA correspondents survey**

**GROUP : SOUTH EAST (FUJIAN)**

| CONTINENT COUNTRY MAKE |              |  | Year 2011     |              |               |
|------------------------|--------------|--|---------------|--------------|---------------|
|                        |              |  | CARS          | LCV          | Total         |
| <b>ASIA</b>            | <b>China</b> | <b>South East (Fujian) Motor Co. ,Ltd.</b> | <b>73 872</b> | <b>4 580</b> | <b>78 452</b> |



**WORLD MOTOR VEHICLE PRODUCTION  
OICA correspondents survey**

**GROUP : SUZUKI**

|              |                  |               | Year 2011        |                |                  |
|--------------|------------------|---------------|------------------|----------------|------------------|
| CONTINENT    | COUNTRY          | MAKE          | CARS             | LCV            | Total            |
| <b>ASIA</b>  | <b>China</b>     | <b>SUZUKI</b> | <b>302 720</b>   |                | <b>302 720</b>   |
|              | <b>India</b>     | <b>SUZUKI</b> | <b>973 118</b>   | <b>150 728</b> | <b>1 123 846</b> |
|              | <b>Indonesia</b> | <b>SUZUKI</b> | <b>22 406</b>    | <b>69 448</b>  | <b>91 854</b>    |
|              | <b>Japan</b>     | <b>SUZUKI</b> | <b>811 689</b>   | <b>138 110</b> | <b>949 799</b>   |
|              | <b>Pakistan</b>  | <b>SUZUKI</b> | <b>55 532</b>    | <b>30 376</b>  | <b>85 908</b>    |
|              | <b>Vietnam</b>   | <b>MARUTI</b> | <b>72</b>        |                | <b>72</b>        |
|              | <b>Total</b>     |               | <b>2 165 537</b> | <b>388 662</b> | <b>2 554 199</b> |
| <b>EU</b>    | <b>Hungary</b>   | <b>SUZUKI</b> | <b>171 700</b>   |                | <b>171 700</b>   |
| <b>Total</b> |                  |               | <b>2 337 237</b> | <b>388 662</b> | <b>2 725 899</b> |

**WORLD MOTOR VEHICLE PRODUCTION  
OICA correspondents survey**

**GROUP : TATA**

|              |                    |                    | Year 2011      |                |                |               |                  |
|--------------|--------------------|--------------------|----------------|----------------|----------------|---------------|------------------|
| CONTINENT    | COUNTRY            | MAKE               | CARS           | LCV            | HCV            | HEAVY BUS     | Total            |
| <b>ASIA</b>  | <b>India</b>       | <b>TATA</b>        | <b>370 072</b> | <b>303 035</b> | <b>204 104</b> | <b>19 604</b> | <b>896 815</b>   |
|              | <b>South Korea</b> | <b>TATA DAEWOO</b> |                |                | <b>9 346</b>   |               | <b>9 346</b>     |
|              | <b>Total</b>       |                    | <b>370 072</b> | <b>303 035</b> | <b>213 450</b> | <b>19 604</b> | <b>906 161</b>   |
| <b>EU</b>    | <b>UK</b>          | <b>JAGUAR</b>      | 49 932         |                |                |               | 49 932           |
|              |                    | <b>LAND ROVER</b>  | 238 237        | 2 862          |                |               | 241 099          |
|              |                    | <b>Total</b>       | <b>288 169</b> | <b>2 862</b>   |                |               | <b>291 031</b>   |
| <b>Total</b> |                    |                    | <b>658 241</b> | <b>305 897</b> | <b>213 450</b> | <b>19 604</b> | <b>1 197 192</b> |

**WORLD MOTOR VEHICLE PRODUCTION**  
**OICA correspondents survey**

**GROUP : TOYOTA**

| CONTINENT      | COUNTRY               | MAKE             | Year 2011        |                  |                |                  | Total            |
|----------------|-----------------------|------------------|------------------|------------------|----------------|------------------|------------------|
|                |                       |                  | CARS             | LCV              | HCV            | HEAVY BUS        |                  |
| <b>AFRICA</b>  | <b>South Africa</b>   | <b>TOYOTA</b>    | <b>62 450</b>    | <b>88 390</b>    |                |                  | <b>150 840</b>   |
| <b>AMERICA</b> | <b>Argentina</b>      | <b>TOYOTA</b>    | <b>10 785</b>    | <b>58 954</b>    |                |                  | <b>69 739</b>    |
|                | <b>Brazil</b>         | <b>TOYOTA</b>    | <b>65 969</b>    |                  |                |                  | <b>65 969</b>    |
|                | <b>Canada</b>         | <b>TOYOTA</b>    | <b>412 776</b>   |                  |                |                  | <b>412 776</b>   |
|                | <b>Mexico</b>         | <b>TOYOTA</b>    |                  | <b>49 596</b>    |                |                  | <b>49 596</b>    |
|                | <b>USA</b>            | <b>TOYOTA</b>    | <b>644 351</b>   | <b>149 012</b>   |                |                  | <b>793 363</b>   |
|                | Venezuela             | DAIHATSU         | 978              |                  |                |                  | 978              |
|                |                       | TOYOTA           | 7 921            | 1 857            |                |                  | 9 778            |
|                |                       | <b>Total</b>     | <b>8 899</b>     | <b>1 857</b>     |                |                  | <b>10 756</b>    |
|                | <b>Total</b>          | <b>1 142 780</b> | <b>259 419</b>   |                  |                | <b>1 402 199</b> |                  |
| <b>ASIA</b>    | China                 | HINO             |                  |                  | 3 756          |                  | 3 756            |
|                |                       | TOYOTA           | 793 518          | 8 218            |                |                  | 801 736          |
|                |                       | <b>Total</b>     | <b>793 518</b>   | <b>8 218</b>     | <b>3 756</b>   |                  | <b>805 492</b>   |
|                | <b>India</b>          | <b>TOYOTA</b>    | <b>136 525</b>   |                  |                |                  | <b>136 525</b>   |
|                | Indonesia             | DAIHATSU         | 191 043          |                  |                |                  | 191 043          |
|                |                       | HINO             |                  |                  | 10 080         |                  | 10 080           |
|                |                       | TOYOTA           | 288 688          | 17 091           |                |                  | 305 779          |
|                |                       | <b>Total</b>     | <b>479 731</b>   | <b>17 091</b>    | <b>10 080</b>  |                  | <b>506 902</b>   |
|                | Japan                 | DAIHATSU         | 479 956          | 129 701          |                |                  | 609 657          |
|                |                       | HINO             |                  | 5 142            | 103 692        | 4 954            | 113 788          |
|                |                       | TOYOTA           | 2 473 546        | 189 635          | 96 847         |                  | 2 760 028        |
|                |                       | <b>Total</b>     | <b>2 953 502</b> | <b>324 478</b>   | <b>200 539</b> | <b>4 954</b>     | <b>3 483 473</b> |
|                | Malaysia              | DAIHATSU         | 192 478          |                  |                |                  | 192 478          |
|                |                       | TOYOTA           | 42 284           | 16 851           |                |                  | 59 135           |
|                |                       | <b>Total</b>     | <b>234 762</b>   | <b>16 851</b>    |                |                  | <b>251 613</b>   |
|                | <b>Pakistan</b>       | <b>TOYOTA</b>    | <b>41 875</b>    | <b>4 224</b>     |                |                  | <b>46 099</b>    |
|                | <b>Philippines</b>    | <b>TOYOTA</b>    | <b>26 128</b>    |                  |                |                  | <b>26 128</b>    |
|                | <b>Taiwan</b>         | <b>TOYOTA</b>    | <b>151 898</b>   |                  |                |                  | <b>151 898</b>   |
|                | <b>Thailand</b>       | <b>TOYOTA</b>    | <b>189 355</b>   | <b>318 467</b>   |                |                  | <b>507 822</b>   |
| <b>Vietnam</b> | <b>TOYOTA</b>         | <b>27 245</b>    |                  |                  |                | <b>27 245</b>    |                  |
|                | <b>Total</b>          | <b>5 034 539</b> | <b>689 329</b>   | <b>214 375</b>   | <b>4 954</b>   | <b>5 943 197</b> |                  |
| <b>EU</b>      | <b>Czech Republic</b> | <b>TOYOTA</b>    | <b>90 687</b>    |                  |                |                  | <b>90 687</b>    |
|                | <b>France</b>         | <b>TOYOTA</b>    | <b>149 813</b>   |                  |                |                  | <b>149 813</b>   |
|                | <b>UK</b>             | <b>TOYOTA</b>    | <b>128 106</b>   |                  |                |                  | <b>128 106</b>   |
|                | <b>Total</b>          |                  | <b>368 606</b>   |                  |                |                  | <b>368 606</b>   |
| <b>EUROPE</b>  | <b>Turkey</b>         | <b>TOYOTA</b>    | <b>91 664</b>    |                  |                |                  | <b>91 664</b>    |
| <b>OCEANIA</b> | <b>Australia</b>      | <b>TOYOTA</b>    | <b>93 675</b>    |                  |                |                  | <b>93 675</b>    |
| <b>Total</b>   |                       |                  | <b>6 793 714</b> | <b>1 037 138</b> | <b>214 375</b> | <b>4 954</b>     | <b>8 050 181</b> |

**WORLD MOTOR VEHICLE PRODUCTION**  
**OICA correspondents survey**

**GROUP : VOLKSWAGEN**

| CONTINENT            | COUNTRY               | MAKE              | Year 2011        |                |                  |                  |
|----------------------|-----------------------|-------------------|------------------|----------------|------------------|------------------|
|                      |                       |                   | CARS             | LCV            | HCV              | Total            |
| <b>AFRICA</b>        | <b>South Africa</b>   | <b>VOLKSWAGEN</b> | <b>137 759</b>   |                |                  | <b>137 759</b>   |
| <b>AMERICA</b>       | <b>Argentina</b>      | <b>VOLKSWAGEN</b> | <b>46 665</b>    | <b>76 966</b>  |                  | <b>123 631</b>   |
|                      | <b>Brazil</b>         | <b>VOLKSWAGEN</b> | <b>746 159</b>   | <b>82 285</b>  |                  | <b>828 444</b>   |
|                      | <b>Mexico</b>         | <b>VOLKSWAGEN</b> | <b>510 041</b>   |                |                  | <b>510 041</b>   |
|                      | <b>USA</b>            | <b>VOLKSWAGEN</b> | <b>40 401</b>    |                |                  | <b>40 401</b>    |
|                      | <b>Total</b>          |                   | <b>1 343 266</b> | <b>159 251</b> |                  | <b>1 502 517</b> |
| <b>ASIA</b>          | <b>China</b>          | <b>VOLKSWAGEN</b> | <b>1 943 330</b> |                |                  | <b>1 943 330</b> |
|                      | <b>India</b>          | <b>VOLKSWAGEN</b> | <b>105 449</b>   |                |                  | <b>105 449</b>   |
|                      | <b>Total</b>          |                   | <b>2 048 779</b> |                |                  | <b>2 048 779</b> |
| <b>EU</b>            | <b>Belgium</b>        | <b>AUDI</b>       | <b>117 566</b>   |                |                  | <b>117 566</b>   |
|                      | <b>Czech Republic</b> | <b>VOLKSWAGEN</b> | <b>602 413</b>   | <b>3 013</b>   |                  | <b>605 426</b>   |
|                      | Germany               | AUDI              | 1 133 343        |                |                  | 1 133 343        |
|                      |                       | VOLKSWAGEN        | 1 448 232        | 110 835        |                  | 1 559 067        |
|                      |                       | <b>Total</b>      | <b>2 581 575</b> | <b>110 835</b> |                  | <b>2 692 410</b> |
|                      | <b>Hungary</b>        | <b>AUDI</b>       | <b>39 518</b>    |                |                  | <b>39 518</b>    |
|                      | <b>Italy</b>          | <b>AUDI</b>       | <b>1 711</b>     |                |                  | <b>1 711</b>     |
|                      | <b>Poland</b>         | <b>VOLKSWAGEN</b> | <b>165 585</b>   | <b>11 416</b>  |                  | <b>177 001</b>   |
|                      | <b>Portugal</b>       | <b>VOLKSWAGEN</b> | <b>133 091</b>   |                |                  | <b>133 091</b>   |
|                      | Slovakia              | AUDI              | 53 707           |                |                  | 53 707           |
|                      |                       | VOLKSWAGEN        | 82 753           |                |                  | 82 753           |
|                      |                       | <b>Total</b>      | <b>136 460</b>   |                |                  | <b>136 460</b>   |
|                      | Spain                 | AUDI              | 19 654           |                |                  | 19 654           |
|                      |                       | VOLKSWAGEN        | 687 025          |                |                  | 687 025          |
|                      |                       | <b>Total</b>      | <b>706 679</b>   |                |                  | <b>706 679</b>   |
| <b>UK</b>            | <b>VOLKSWAGEN</b>     | <b>7 648</b>      |                  |                | <b>7 648</b>     |                  |
| <b>Total</b>         |                       | <b>4 492 246</b>  | <b>125 264</b>   |                | <b>4 617 510</b> |                  |
| <b>EUROPE</b>        | <b>Russia</b>         | <b>VOLKSWAGEN</b> | <b>135 008</b>   |                |                  | <b>135 008</b>   |
| <b>NOT SPECIFIED</b> | <b>Not specified</b>  | <b>SCANIA</b>     |                  |                | <b>84 000</b>    | <b>84 000</b>    |
| <b>Total</b>         |                       |                   | <b>8 157 058</b> | <b>284 515</b> | <b>84 000</b>    | <b>8 525 573</b> |

**WORLD MOTOR VEHICLE PRODUCTION**  
**OICA correspondents survey**

**GROUP : VOLVO**

| CONTINENT            | COUNTRY              | MAKE         | Year 2011      |               |                |
|----------------------|----------------------|--------------|----------------|---------------|----------------|
|                      |                      |              | HCV            | HEAVY BUS     | Total          |
| <b>NOT SPECIFIED</b> | <b>Not specified</b> | <b>VOLVO</b> | <b>238 400</b> | <b>12 790</b> | <b>251 190</b> |

**WORLD MOTOR VEHICLE PRODUCTION  
OICA correspondents survey**

**GROUP : XIAMEN KING LONG**

| CONTINENT COUNTRY MAKE |              |  | Year 2011     |               |               |
|------------------------|--------------|--|---------------|---------------|---------------|
|                        |              |  | LCV           | HEAVY BUS     | Total         |
| <b>ASIA</b>            | <b>China</b> | <b>Xiamen King Long Motor Group Co., Ltd</b> | <b>29 388</b> | <b>41 779</b> | <b>71 167</b> |